

# Modular Ferrule Fuse Blocks for Midget Class and CC Fuses



## Description

- BCM Series for use with Class CC fuses EDCC, HCTR and HCLR
- BMM Series for use with Midget Class Midget fuses MCL, MEQ, MEN & MOL

### Mounting

35mm DIN rail or panel mount

## Specifications

### Materials:

Base – Thermoplastic

Terminals – Tin-plated bimetallic copper

Covers – Thermoplastic

Screws and pressure plates – Zinc-plated steel

**SCCR:** 200kA

### Flammability rating:

Blocks – UL 94V0, self-extinguishing

Covers – UL 94HB, self-extinguishing

### Operating and storage temp range:

Blocks – -40° to 120°C [-40° to 248°F]

Covers – indicating -20° to 90°C [-4° to 194°F]

– non-indicating -40° to 120°C [-40° to 248°F]

### Wire:

Cu – 75°/90°C [167°/194°F]

Ring or Fork terminal to fit a #10-32 screw

## Agency Approvals

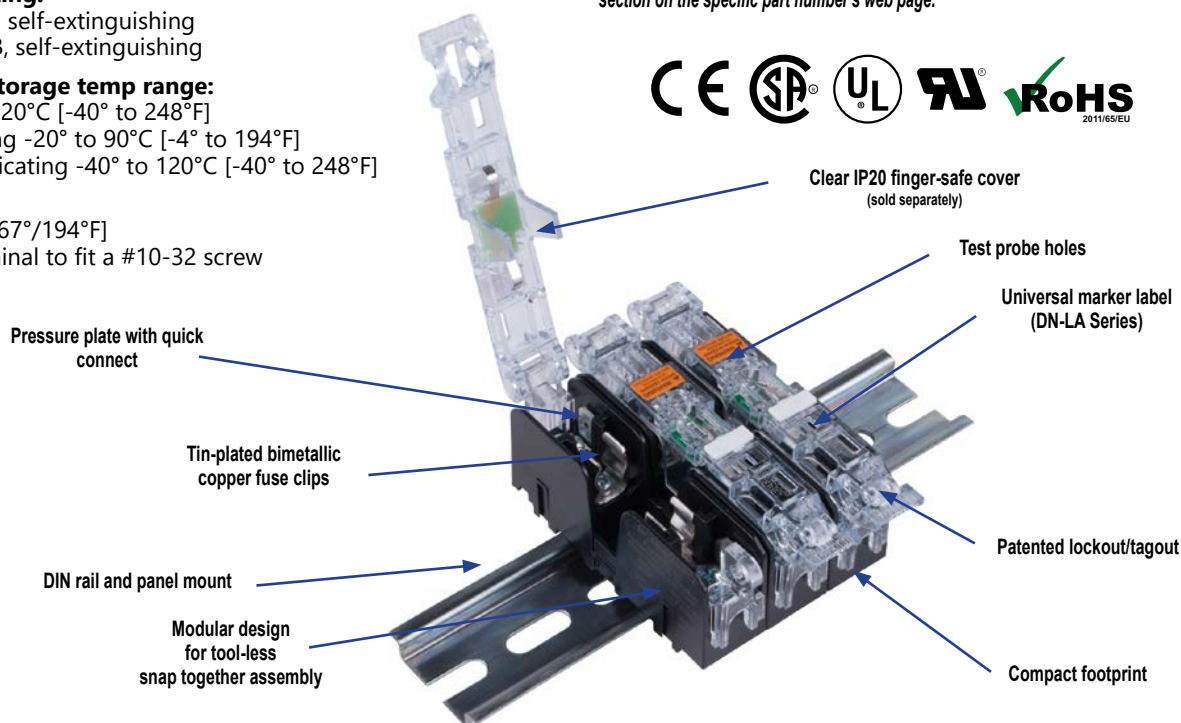
### Fuse Blocks

- BCM – UL® Listed E14853 - IZLT
- BMM and BCM UL Recognized E14853-IZLT2
- CSA® Certified 47235-6225-01
- CE
- RoHS Compliant
- Conflict mineral free
- REACH Compliant

### Covers

- Covers are included in the overall UL Listing/Recognition and CSA Certification
- IP20 finger-safe
- RoHS compliant
- REACH Compliant

To obtain the most current agency approval information, see the Agency Approval Checklist section on the specific part number's web page.



Pressure Plate (with Quick Connect**) Modular Ferrule Fuse Blocks for Midget Class and CC Fuses													
Class	Part Number	Pc/pkg	Price	Volts	Amps	Poles	Wire Range <sup>1</sup>		Torque lb-in [N·m]	Wt. lb [kg]	Covers* (Sold Separately)		
							Solid and Stranded	Fine Stranded			w/o Indication	With Indication <sup>3</sup>	Pc/pkg
Midget	BMM603-1PQ	15	\$152.00	600V AC/DC	30	1	18-10 AWG	18-10 AWG	20 [2.3]	0.05 [0.04]	CVR-CCM-QC \$31.50	CVRI-CCM-QC \$41.00	3
	BMM603-2PQ	5	\$86.00			2				0.15 [0.06]			
	BMM603-3PQ	5	\$110.00			3				0.20 [0.10]			
	BMM603-1PQ-1	1	\$11.00			1				0.05 [0.04]			
CC	BCM603-1PQ	15	\$209.00			1				0.05 [0.04]			
	BCM603-2PQ	5	\$107.00			2				0.15 [0.06]			
	BCM603-3PQ	5	\$134.00			3				0.20 [0.10]			
	BCM603-1PQ-1	1	\$15.00			1				0.05 [0.04]			
Combo	BCCMM603-3PQ <sup>2</sup>	5	\$146.00			3				0.20 [0.10]			

<sup>1</sup> Ratings are for copper wire only.

<sup>2</sup> Combination modular fuse block for use with transformers. Accepts two (2) Class CC and one (1) Midget class fuse.

<sup>3</sup> Open fuse indication requires 90V minimum and closed circuit to operate.

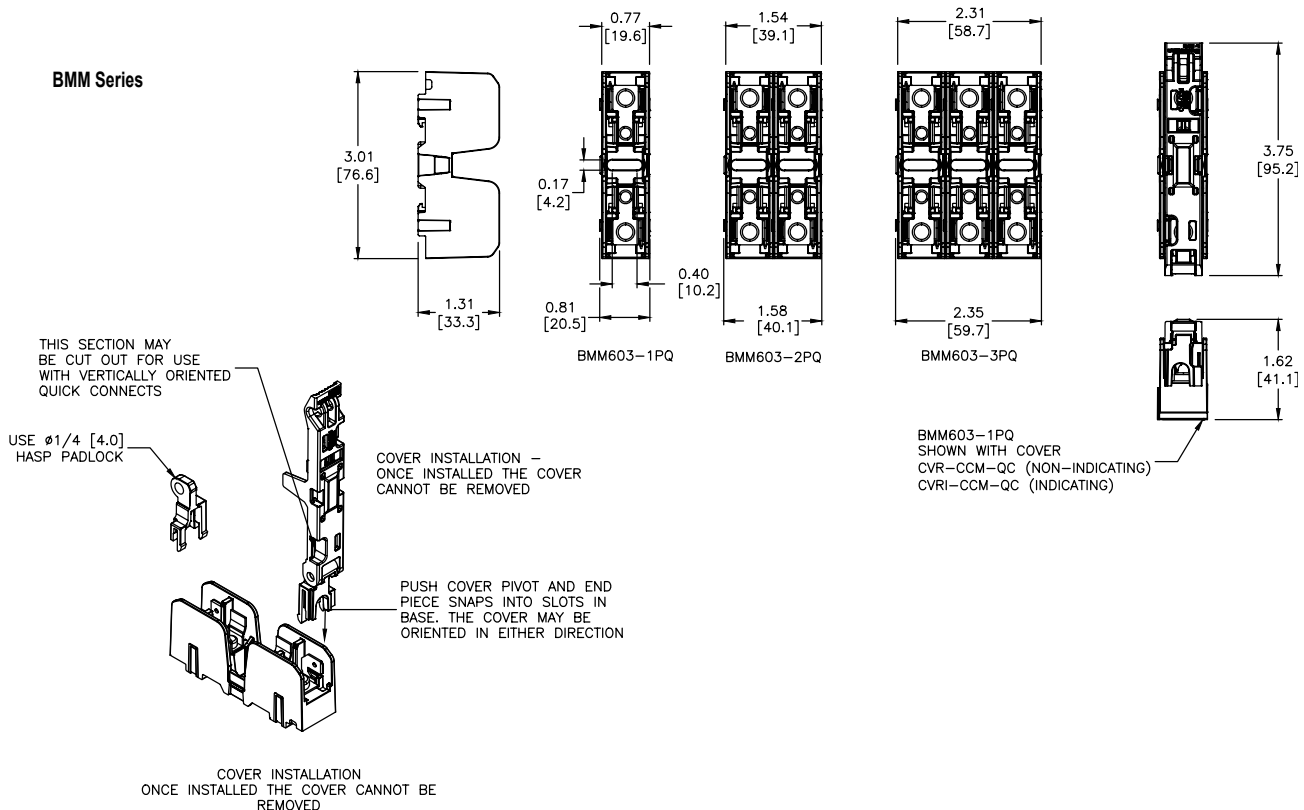
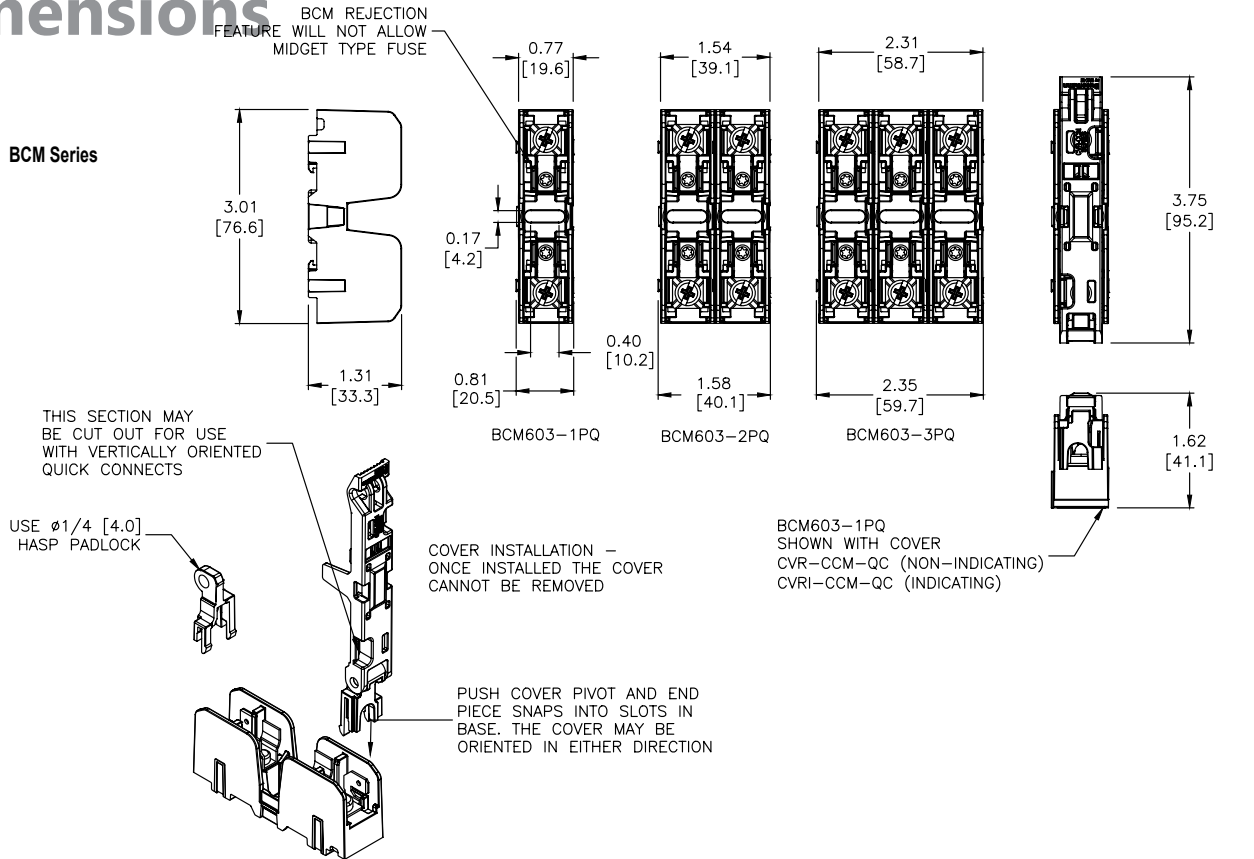
\*Once installed, the cover cannot be removed.

\*\*Quick connect terminal rated for 20A maximum.

# Modular Ferrule Fuse Blocks for Midget Class and CC Fuses

## Dimensions

in [mm]

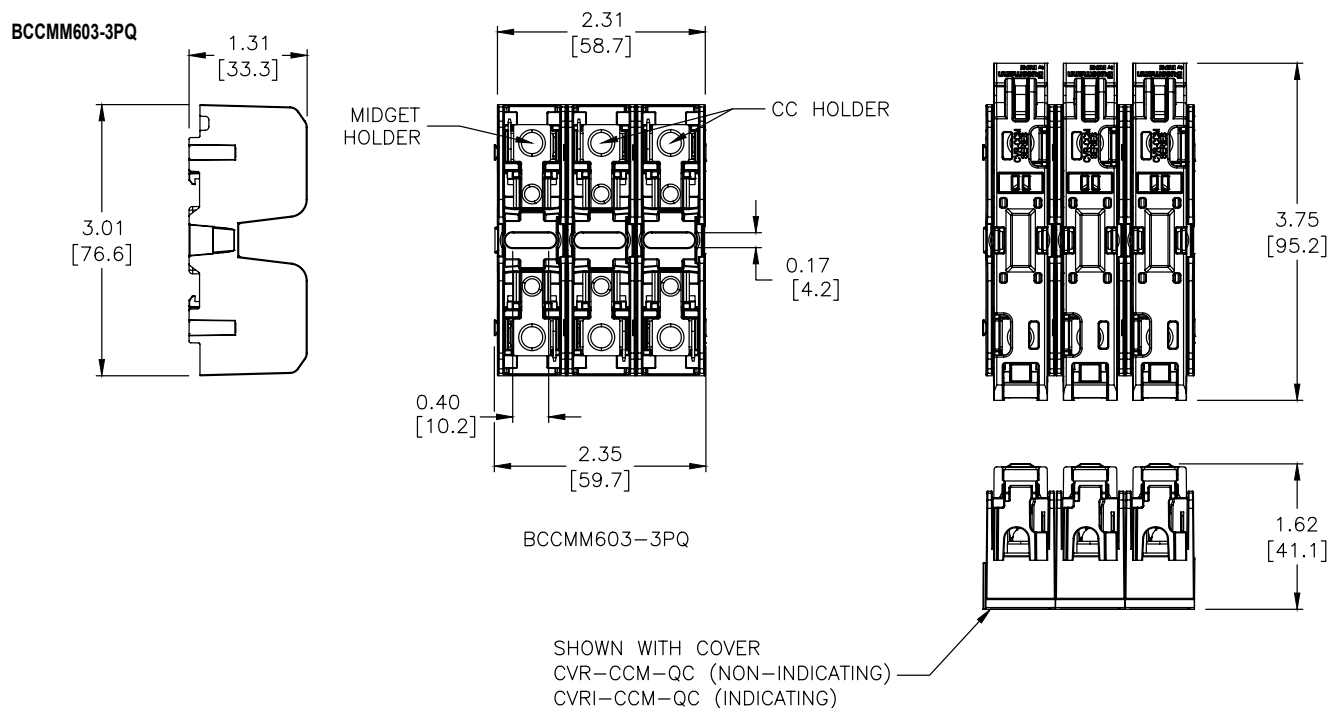


Please see our website [www.AutomationDirect.com](http://www.AutomationDirect.com) for complete engineering drawings. Dimensions are approximate. Not for construction purposes.

# Modular Ferrule Fuse Blocks for Midget Class and CC Fuses

## Dimensions

in [mm]



Please see our website [www.AutomationDirect.com](http://www.AutomationDirect.com) for complete engineering drawings. Dimensions are approximate. Not for construction purposes.