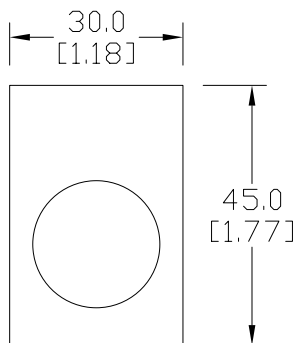


EAT•N E22 Legend Plates

Cutler-Hammer

Legend plates

Aluminum legend plates feature a plastisol backing to help prevent rotation of the operator.



Dimensions: mm [inches]

E22VA8



Legend Plates			
Color	Part Number	Legend	Price
Black	E22NS11	"CLOSE"	\$4.50
Black	E22NS12	"DOWN"	\$4.50
Red	E22NS13	"EMERG. STOP"	\$4.50
Black	E22NS15	"FORWARD"	\$4.50
Black	E22NS19	"JOG"	\$4.50
Black	E22NS25	"ON"	\$4.50
Black	E22NS26	"OPEN"	\$4.50
Black	E22NS30	"REVERSE"	\$4.50
Black	E22NS31	"RUN"	\$4.50
Black	E22NS33	"START"	\$4.50
Red	E22NS34	"STOP"	\$4.50
Black	E22NS35	"UP"	\$4.50
Black	E22NS36	Blank plate	\$4.50
Red	E22NS37	Blank plate	\$4.50
Black	E22NS38	"FOR-REV"	\$4.50
Black	E22NS39	"HAND-AUTO"	\$4.50
Black	E22NS41	"JOG-RUN"	\$4.50
Black	E22NS42	"OFF-ON"	\$4.50
Black	E22NS43	"OPEN-CLOSE"	\$4.50
Black	E22NS48	"UP-DOWN"	\$4.50
Black	E22NS50	"FOR-OFF-REV"	\$4.50
Black	E22NS51	"HAND-OFF-AUTO"	\$4.50
Black	E22NS80	"POWER ON"	\$4.50
Black	E22NS81	"MOTOR RUN"	\$4.50
Black	E22NS82	"MOTOR STOP"	\$4.50
Black	E22NL36	Jumbo alum. blank plate (1.57 in wide x 1.85 in tall)	\$4.50
Red	E22NL37	Jumbo alum. blank plate (1.57 in wide x 1.85 in tall)	\$4.50
Red/black	E22NSP77	Plastic blank plate; red on one side, black on other side; either side can have letters engraved down into white plastic	\$4.50
Yellow	E22VA8	"EMERGENCY STOP" oversize yellow legend plate, 2.76" (70mm), printed	\$7.25

NOTE: Legend plates also work with the GCX/ECX series 22mm metal switches. The removal of the locator tab on the legend plate is required. This is easily accomplished with a round file or small grinder.