



# E22 Key Switches and Accessories

Cutler-Hammer

## Two-position key switches



Key Switches			
Part Number	Description	Price	Drawing Link
<a href="#">E22KB53A</a>	Selector switch, black bezel, 2-position key, "OFF ON" with one N.O. contact block	\$101.00	<a href="#">PDF</a>
<a href="#">E22KB62A</a>	Selector switch, black bezel, 2-position key, spring from right "OFF ON" with one N.O. contact block	\$101.00	<a href="#">PDF</a>

See specifications and mounting data at the beginning of this E22 series section.

**Notes:**

All E22 series key switches are keyed alike. The key is not compatible with the metal 22mm key switches.

All E22 series key switches will hold only one single row of (2) contacts (non-stackable).

Key can be removed in all positions.

## Replacement contact blocks



[E22B1](#)



[E22B2](#)



[E22CB1M](#)

Replacement Contact Blocks			
Part Number	Description	Price	Drawing Link
<a href="#">E22B1*</a>	One N.C. contact (Direct Opening Action)	\$19.50	<a href="#">PDF</a>
<a href="#">E22B2</a>	One N.O. contact	\$19.50	<a href="#">PDF</a>
<a href="#">E22B11*</a>	One N.O., One N.C. contact (N.C. Direct Opening Action)	\$35.00	<a href="#">PDF</a>
<a href="#">E22B20</a>	Two N.O. contacts	\$35.00	<a href="#">PDF</a>
<a href="#">E22CB1M*</a>	Self-monitoring contact block (N.C. Direct Opening Action)	\$45.00	<a href="#">PDF</a>

Note: See contact electrical ratings on E22 series mounting and contact ratings page in this E22 series section.

\*All N.C. contact blocks are EN 418 compliant when used with compliant operators.

# E22 Accessories

Cutler-Hammer

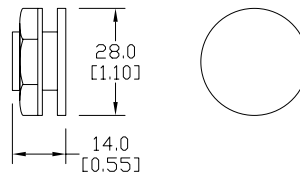
## Octagonal wrench



## Hole plug



Dimensions: mm [inches]



## Bulb removal tool



## Guard for E22 E-stop



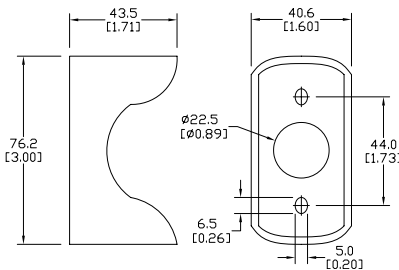
## Replacement incandescent bulbs



## Replacement LED lamps



Accessories		
Part number	Description	Price
<b>HT8WRENCH</b>	Octagonal wrench for tightening back-of-panel mounting nut on all Cutler-Hammer operators.	\$17.50
<b>E22BHP</b>	Hole plug for unused 22mm panel holes.	\$13.50
<b>HT8LAMPTOOL</b>	Lamp extraction tool for removing lamps from switches, indicators and stacklights	\$9.50
<b>E22MGTA</b>	22mm yellow guard for E22LTA2QB and E22LPB2B for emergency stop applications.	\$29.50



Replacement Incandescent Bulbs				
Part Number	Rating	Description	Quantity	Price
<b>ECX1900-5</b>	6V, 1.2 watts	6V replacement bulb for 22mm switches and indicators. Miniature bayonet base T31/4.	5	\$9.50
<b>ECX1902-5</b>	24V@80mA	24V replacement bulb for 22mm switches and indicators. Miniature bayonet base T31/4.	5	\$9.50
<b>ECX1904-5</b>	130V@20mA	120V replacement bulb for 22mm switches and indicators. Miniature bayonet base T31/4.	5	\$20.00
<b>W1121</b>	120V@20mA	Replacement bulb for Cutler-Hammer E22 full voltage indicators and switches. Does not replace the LED monoblock indicators.	4	\$36.00
<b>W1226</b>	60V@20mA	Replacement bulb for Cutler-Hammer E22 resistor indicators, switches and pushbuttons. Does not replace the LED monoblock indicators.	4	\$36.00
<b>W1819</b>	24V@20mA	Replacement bulb for Cutler-Hammer E22 indicators and pushbuttons. Does not replace the LED monoblock indicators.	4	\$36.00

Replacement LED Lamps					
Part Number	Color	Rating	Description	Quantity	Price
<b>ECX1911-2</b>	Red	24V@26mA	LED replacement lamp for miniature bayonet bases Works with 22mm switches and indicators, but illumination will not be as even when used with the ECX 22mm indicators Note: Will not replace sealed Cutler-Hammer monoblock LED indicators.	2	\$17.50
<b>ECX1912-2</b>	Green				\$22.00
<b>ECX1913-2</b>	Yellow				\$17.50
<b>ECX1914-2</b>	Blue				\$23.50
<b>ECX1915-2</b>	White				\$28.00
<b>ECX1921-2</b>	Red	120V@5mA			\$17.50
<b>ECX1922-2</b>	Green				\$22.00
<b>ECX1923-2</b>	Yellow				\$17.50
<b>ECX1924-2</b>	Blue				\$23.50
<b>ECX1925-2</b>	White				\$28.00

# EATON E22 Legend Plates

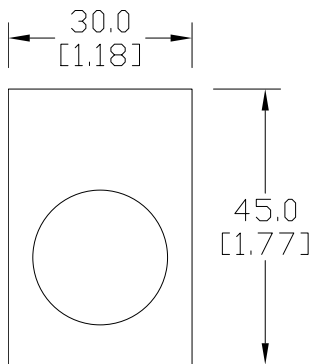
Cutler-Hammer

## Legend plates

Aluminum legend plates feature a plastisol backing to help prevent rotation of the operator.



Dimensions: mm [inches]



**E22VA8**

Legend Plates				
Part Number	Price	Color	Legend	Drawing Link
<a href="#">E22NS11</a>	\$7.25	Black	"CLOSE"	<a href="#">PDF</a>
<a href="#">E22NS12</a>	\$7.25	Black	"DOWN"	<a href="#">PDF</a>
<a href="#">E22NS13</a>	\$7.25	Red	"EMERG. STOP"	<a href="#">PDF</a>
<a href="#">E22NS15</a>	\$7.25	Black	"FORWARD"	<a href="#">PDF</a>
<a href="#">E22NS19</a>	\$7.25	Black	"JOG"	<a href="#">PDF</a>
<a href="#">E22NS25</a>	\$7.25	Black	"ON"	<a href="#">PDF</a>
<a href="#">E22NS26</a>	\$7.25	Black	"OPEN"	<a href="#">PDF</a>
<a href="#">E22NS30</a>	\$7.25	Black	"REVERSE"	<a href="#">PDF</a>
<a href="#">E22NS31</a>	\$7.25	Black	"RUN"	<a href="#">PDF</a>
<a href="#">E22NS33</a>	\$7.25	Black	"START"	<a href="#">PDF</a>
<a href="#">E22NS34</a>	\$7.25	Red	"STOP"	<a href="#">PDF</a>
<a href="#">E22NS35</a>	\$7.25	Black	"UP"	<a href="#">PDF</a>
<a href="#">E22NS36</a>	\$7.25	Black	Blank plate	<a href="#">PDF</a>
<a href="#">E22NS37</a>	\$7.25	Red	Blank plate	<a href="#">PDF</a>
<a href="#">E22NS38</a>	\$7.25	Black	"FOR-REV"	<a href="#">PDF</a>
<a href="#">E22NS39</a>	\$7.25	Black	"HAND-AUTO"	<a href="#">PDF</a>
<a href="#">E22NS41</a>	\$7.25	Black	"JOG-RUN"	<a href="#">PDF</a>
<a href="#">E22NS42</a>	\$7.25	Black	"OFF-ON"	<a href="#">PDF</a>
<a href="#">E22NS43</a>	\$7.25	Black	"OPEN-CLOSE"	<a href="#">PDF</a>
<a href="#">E22NS48</a>	\$7.25	Black	"UP-DOWN"	<a href="#">PDF</a>
<a href="#">E22NS50</a>	\$7.25	Black	"FOR-OFF-REV"	<a href="#">PDF</a>
<a href="#">E22NS51</a>	\$7.25	Black	"HAND-OFF-AUTO"	<a href="#">PDF</a>
<a href="#">E22NS80</a>	\$7.25	Black	"POWER ON"	<a href="#">PDF</a>
<a href="#">E22NS81</a>	\$7.25	Black	"MOTOR RUN"	<a href="#">PDF</a>
<a href="#">E22NS82</a>	\$7.25	Black	"MOTOR STOP"	<a href="#">PDF</a>
<a href="#">E22NL36</a>	\$7.25	Black	Jumbo alum. blank plate (1.57 in wide x 1.85 in tall)	<a href="#">PDF</a>
<a href="#">E22NL37</a>	\$7.25	Red	Jumbo alum. blank plate (1.57 in wide x 1.85 in tall)	<a href="#">PDF</a>
<a href="#">E22NSP77</a>	\$7.25	Red /black	Plastic blank plate; red on one side, black on other side; either side can have letters engraved down into white plastic	<a href="#">PDF</a>
<a href="#">E22VA8</a>	\$12.00	Yellow	"EMERGENCY STOP" oversize yellow legend plate, 2.76" (70mm), printed	N/A

**NOTE:** Legend plates also work with the GCX/ECX series 22mm metal switches. The removal of the locator tab on the legend plate is required. This is easily accomplished with a round file or small grinder.