

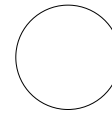
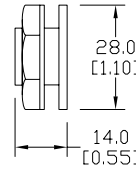
# EAT•N E22 Accessories

Cutler-Hammer

## Octagonal wrench



## Hole plug



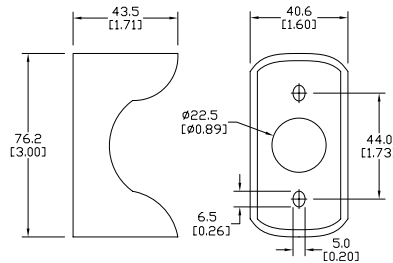
Dimensions: mm [inches]

## Bulb removal tool



Accessories		
Part number	Description	Price
<b>HT8WRENCH</b>	Octagonal wrench for tightening back-of-panel mounting nut on all Cutler-Hammer operators.	\$11.00
<b>E22BHP</b>	Hole plug for unused 22mm panel holes.	\$8.25
<b>HT8LAMPTOOL</b>	Lamp extraction tool for removing lamps from switches, indicators and stacklights	\$8.25
<b>E22MGTA</b>	22mm yellow guard for E22LTA2QB and E22LPB2B for emergency stop applications.	\$17.50

## Guard for E22 E-stop



Dimensions: mm [inches]

## Replacement incandescent bulbs



Replacement Incandescent Bulbs				
Part Number	Rating	Description	Quantity	Price
<b>ECX1900-5</b>	6V, 1.2 watts	6V replacement bulb for 22mm switches and indicators. Miniature bayonet base T31/4.	pkg. of 5 bulbs	\$8.75
<b>ECX1902-5</b>	24V@ 80mA	24V replacement bulb for 22mm switches and indicators. Miniature bayonet base T31/4.	pkg. of 5 bulbs	\$8.75
<b>ECX1904-5</b>	130V@20mA	120V replacement bulb for 22mm switches and indicators. Miniature bayonet base T31/4.	pkg. of 5 bulbs	\$18.00
<b>W1121</b>	120V@20mA	Replacement bulb for Cutler-Hammer E22 full voltage indicators and switches. Does not replace the LED monoblock indicators.	pkg. of 4 bulbs	\$22.00
<b>W1226</b>	60V@20mA	Replacement bulb for Cutler-Hammer E22 resistor indicators, switches and pushbuttons. Does not replace the LED monoblock indicators.	pkg. of 4bulbs	\$22.00
<b>W1819</b>	24V@20mA	Replacement bulb for Cutler-Hammer E22 indicators and pushbuttons. Does not rbulbeplace the LED monoblock indicators.	pkg. of 4bulbs	\$22.00

## Replacement LED lamps



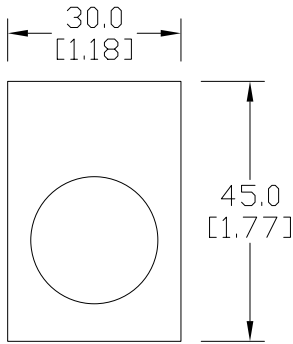
Replacement LED Lamps					
Part Number	Color	Rating	Description	Quantity	Price
<b>ECX1911-2</b>	Red	24V@26mA	LED replacement lamp for miniature bayonet bases Works with 22mm switches and indicators, but illumination will not be as even when used with the ECX 22mm indicators	pkg. of 2 LED bulbs	\$16.00
<b>ECX1912-2</b>	Green				\$20.00
<b>ECX1913-2</b>	Yellow				\$16.00
<b>ECX1914-2</b>	Blue				\$21.50
<b>ECX1915-2</b>	White				\$25.00
<b>ECX1921-2</b>	Red	120V@5mA	Note: <b>Will not replace</b> sealed Cutler-Hammer monoblock LED indicators.		\$16.00
<b>ECX1922-2</b>	Green				\$20.00
<b>ECX1923-2</b>	Yellow				\$16.00
<b>ECX1924-2</b>	Blue				\$21.50
<b>ECX1925-2</b>	White				\$25.00

# EAT·N E22 Legend Plates

Cutler-Hammer

## Legend plates

Aluminum legend plates feature a plastisol backing to help prevent rotation of the operator.



Dimensions: mm [inches]

### E22VA8



Legend Plates			
Color	Part Number	Legend	Price
Black	<b>E22NS11</b>	"CLOSE"	\$4.50
Black	<b>E22NS12</b>	"DOWN"	\$4.50
Red	<b>E22NS13</b>	"EMERG. STOP"	\$4.50
Black	<b>E22NS15</b>	"FORWARD"	\$4.50
Black	<b>E22NS19</b>	"JOG"	\$4.50
Black	<b>E22NS25</b>	"ON"	\$4.50
Black	<b>E22NS26</b>	"OPEN"	\$4.50
Black	<b>E22NS30</b>	"REVERSE"	\$4.50
Black	<b>E22NS31</b>	"RUN"	\$4.50
Black	<b>E22NS33</b>	"START"	\$4.50
Red	<b>E22NS34</b>	"STOP"	\$4.50
Black	<b>E22NS35</b>	"UP"	\$4.50
Black	<b>E22NS36</b>	Blank plate	\$4.50
Red	<b>E22NS37</b>	Blank plate	\$4.50
Black	<b>E22NS38</b>	"FOR-REV"	\$4.50
Black	<b>E22NS39</b>	"HAND-AUTO"	\$4.50
Black	<b>E22NS41</b>	"JOG-RUN"	\$4.50
Black	<b>E22NS42</b>	"OFF-ON"	\$4.50
Black	<b>E22NS43</b>	"OPEN-CLOSE"	\$4.50
Black	<b>E22NS48</b>	"UP-DOWN"	\$4.50
Black	<b>E22NS50</b>	"FOR-OFF-REV"	\$4.50
Black	<b>E22NS51</b>	"HAND-OFF-AUTO"	\$4.50
Black	<b>E22NS80</b>	"POWER ON"	\$4.50
Black	<b>E22NS81</b>	"MOTOR RUN"	\$4.50
Black	<b>E22NS82</b>	"MOTOR STOP"	\$4.50
Black	<b>E22NL36</b>	Jumbo alum. blank plate (1.57 in wide x 1.85 in tall)	\$4.50
Red	<b>E22NL37</b>	Jumbo alum. blank plate (1.57 in wide x 1.85 in tall)	\$4.50
Red/black	<b>E22NSP77</b>	Plastic blank plate; red on one side, black on other side; either side can have letters engraved down into white plastic	\$4.50
Yellow	<b>E22VA8</b>	"EMERGENCY STOP" oversize yellow legend plate, 2.76" (70mm), printed	\$7.25

**NOTE:** Legend plates also work with the GCX/ECX series 22mm metal switches. The removal of the locator tab on the legend plate is required. This is easily accomplished with a round file or small grinder.