

C-more Quick Look

Hardware Selection

Part Number	Ethernet	SD Card Slot	Serial Ports	HDMI Video Output	Audio Output	USB Ports
EA9-T6CL-R		1 Slot	1 Port			USB 2.0 Type A and B
EA9-T7CL-R	Yes	1 Slot	1 Port			
EA9-T6CL	Yes	1 Slot	3 Ports		Yes	
EA9-T7CL	Yes	1 Slot	3 Ports		Yes	
EA9-T8CL	Yes	1 Slot	3 Ports		Yes	
EA9-T10CL	Yes	1 Slot	3 Ports		Yes	
EA9-T10WCL	Yes	1 Slot	3 Ports		Yes	
EA9-T12CL	Yes	2 Slots	3 Ports	Yes	Yes	
EA9-T15CL	Yes	2 Slots	3 Ports	Yes	Yes	
EA9-T15CL-R	Yes	2 Slots	1 Port			

Hardware Features

- 64K colors and LED backlights
- 800MHz CPU
- 26MB to 82MB project memory depending on model
- 12 to 24 VDC powered (Optional AC module available)
- Built in Real-time Clock with 30 day backup (No Battery required)
- NEMA 4/4X IP65
- USB 2.0 Type A for USB HID compliant devices / Storage memory devices
- USB 2.0 Type B port for Programming

Software Features

- Over 50 objects including 16 pen trends, switches, PID trend faceplate, PID bar graph
- Event Manager allows for Logging and Notifications
- Language support for objects in German, French, Italian, Spanish, Chinese and Japanese Characters
- Project simulator
- Bitmap animation
- E-mail messaging
- Built-in FTP server / Web server
- Popup windows
- Data logging to USB/SD Flash Drive
- USB 2.0 Type B port for Programming
- Historical alarms with time and date stamp along with alarm frequency reporting
- Supports simultaneous communication to multiple brands of PLC/PACs
- Mouse and Keyboard support within the Project
- Remote HMI feature with smart phone / tablet / PC
- 2 year Warranty and a 30-Day Money Back Policy

Please refer to the catalog technical section for details.

Support Features

- Free Top Rated Technical Phone Support
- 2 year Warranty and a 30-Day Money Back Policy

Please refer to the catalog technical section for details.

Supported drivers

AutomationDirect PLCs

- Do-more PLCs
- K-Sequence (*Direct*LOGIC PLCs)
- DirectNET (*Direct*LOGIC PLCs)
- Modbus (Productivity Series controllers, *Direct*LOGIC PLCs, CLICK PLCs)
- ECOM Ethernet (*Direct*LOGIC PLCs)
- Think & Do (Modbus RTU and Modbus TCP/IP)
- GS Drives
- SOLO Temperature Controllers

Modbus RTU

Modbus TCP/IP

Allen-Bradley

- A-B DF1
- A-B DH485
- A-B EtherNet/IP Client
- A-B Ethernet/IP Server Generic IO Messaging

GE

- 90/30, 90/70, Micro 90, VersaMax Micro (SNPX)
- 90/30, Rx3i (SRTP Ethernet)

Omron

- Omron Host Link Adapter
- Omron FINS (Serial and Ethernet)

Mitsubishi

- FX Series CPU
- FX-1N(C), 2N(C), 3U(C) CPU
- Q Series (QO2, QO2H, Q06H, Q12H, Q25H CPU)
- Q/QnA (Serial and Ethernet)

Siemens

- S7-200 (Serial: PPI)
- S7-200 (Ethernet: ISO over TCP/IP)
- S7-300 (Ethernet: ISO over TCP/IP)
- S7-400 (Ethernet: ISO over TCP/IP)
- S7-1200 (Ethernet: ISO over TCP/IP)

Please refer to the Compatibility Table in the following technical section for detailed information about which protocols are available for use with specific controllers.

more Value for LESS!

Base Model



**C-more 6in
EA9-T6CL-R**

C-more EA9 series touch screen HMI, 6in color TFT LCD, 320 x 240, QVGA, supports (1) serial and (2) USB ports and (1) memory card slot.

\$499

Full Feature Models



**C-more 6in
EA9-T6CL**

C-more EA9 series touch screen HMI, 6in color TFT LCD, 320 x 240, QVGA, supports (3) serial, (1) Ethernet and (2) USB ports, (1) memory card slot and (1) audio line out

\$699



**C-more 7in Widescreen
EA9-T7CL-R**

C-more EA9 series touch screen HMI, 7in color TFT LCD, widescreen, 800 x 480, WVGA, supports (1) serial, (1) Ethernet and (2) USB ports and (1) memory card slot.

\$465



**C-more 7in Widescreen
EA9-T7CL**

C-more EA9 series touch screen HMI, 7in color TFT LCD, widescreen, 800 x 480, WVGA, supports (3) serial, (1) Ethernet and (2) USB ports, (1) memory card slot and (1) audio line out.

\$540



**C-more 15in Widescreen
EA9-T15CL-R**

C-more EA9 series touch screen HMI, 15in color TFT LCD, 1024 x 768 pixels, XGA, LED backlight, supports (1) serial, (1) Ethernet and (2) USB ports, (2) memory card slots.

\$1299



**C-more 8in
EA9-T8CL**

C-more EA9 series touch screen HMI, 8in color TFT LCD, 800 x 600, SVGA, supports (3) serial, (1) Ethernet and (2) USB ports, (1) memory card slot and (1) audio line out.

\$999

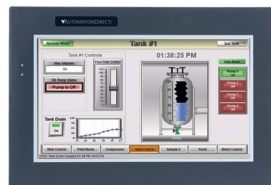
More Full Feature Models



**C-more 10in
EA9-T10CL**

C-more EA9 series touch screen HMI, 10in color TFT LCD, 800 x 600, SVGA, supports (3) serial, (1) Ethernet and (2) USB ports, (1) memory card slot and (1) audio line out.

\$1290



**C-more 10in Widescreen
EA9-T10WCL**

C-more EA9 series touch screen HMI, 10in color TFT LCD, wide-screen, 1024 x 600, WSVGA, supports (3) serial, (1) Ethernet and (2) USB ports, (1) memory card slot and (1) audio line out.

\$685

Enhanced Feature Models



**C-more 12in
EA9-T12CL**

C-more EA9 series touch screen HMI, 12in color TFT LCD, 800 x 600, SVGA, supports (3) serial, (1) Ethernet and (2) USB ports, (2) memory card slots, (1) HDMI video out and (1) audio line out.

\$1790



**C-more 15in
EA9-T15CL**

C-more EA9 series touch screen HMI, 15in color TFT LCD, 1024 x 768, XGA, supports (3) serial, (1) Ethernet and (2) USB ports, (2) memory card slots, (1) HDMI video out and (1) audio line out.

\$1999

All Models Compatible with EA9-PGMSW programming software version 5.0 or later.
See technical specifications for available features in each model

C-more Operator Panels Overview

Getting started

Installing the software and configuring the **C-more** panel is simple. You will need the following to successfully connect, configure and send a project to the panel:

- **C-more** touch panel - 6", 7" wide, 8", 10", 10" wide, 12" or 15" model
- **C-more** Programming Software, p/n EA9-PGMSW
- **C-more** programming cable, USB or Ethernet
- 12-24 VDC switching power supply or the optional **C-more** AC Power Adapter, p/n EA-AC
- Personal Computer - to run **C-more** programming software
- PLC communications cable (serial or Ethernet) to connect the **C-more** touch panel to your controller

Part Number	Description	Price
EA9-T6CL-R	<i>C-more</i> EA9 series touch screen HMI, 6in color TFT LCD, 320 x 240, QVGA, supports (1) serial and (2) USB ports and (1) memory card slot.	\$499.00
EA9-T6CL	<i>C-more</i> EA9 series touch screen HMI, 6in color TFT LCD, 320 x 240, QVGA, supports (3) serial, (1) Ethernet and (2) USB ports and (1) memory card slot, audio line out.	\$699.00
EA9-T7CL-R	<i>C-more</i> EA9 series touch screen HMI, 7in color TFT LCD, widescreen, 800 x 480, WVGA, supports (1) serial, (1) Ethernet and (2) USB ports and (1) memory card slot.	\$465.00
EA9-T7CL	<i>C-more</i> EA9 series touch screen HMI, 7in color TFT LCD, widescreen, 800 x 480, WVGA, supports (3) serial, (1) Ethernet and (2) USB ports and (1) memory card slot, audio line out.	\$540.00
EA9-T8CL	<i>C-more</i> EA9 series touch screen HMI, 8in color TFT LCD, 800 x 600, SVGA, supports (3) serial, (1) Ethernet and (2) USB ports and (1) memory card slot, audio line out.	\$999.00
EA9-T10CL	<i>C-more</i> EA9 series touch screen HMI, 10in color TFT LCD, 800 x 600, SVGA, supports (3) serial, (1) Ethernet and (2) USB ports and (1) memory card slot, audio line out.	\$1,290.00
EA9-T10WCL	<i>C-more</i> EA9 series touch screen HMI, 10in color TFT LCD, widescreen, 1024 x 600 pixel, WSVGA, LED backlight, supports (3) serial, (1) Ethernet and (2) USB ports, (1) memory card slot and (1) audio line out.	\$685.00
EA9-T12CL	<i>C-more</i> EA9 series touch screen HMI, 12in color TFT LCD, 800 x 600, SVGA, supports (3) serial, (1) Ethernet and (2) USB ports, (2) memory card slots and (1) HDMI video out, audio line out.	\$1,790.00
EA9-T15CL-R	<i>C-more</i> EA9 series touch screen HMI, 15in color TFT LCD, 1024 x 768 pixel, XGA, LED backlight, supports (1) serial, (1) Ethernet and (2) USB ports and (2) memory card slots.	\$1,299.00
EA9-T15CL	<i>C-more</i> EA9 series touch screen HMI, 15in color TFT LCD, 1024 x 768, XGA, supports (3) serial, (1) Ethernet and (2) USB ports, (2) memory card slots and (1) HDMI video out, audio line out.	\$1,999.00
EA9-PGMSW	<i>C-more</i> Windows-based programming software, CD. For use with <i>C-more</i> EA9 series touch panels. Requires USB or Ethernet connection to touch panel. (Does not support <i>C-more</i> EA7 series panels.)	\$99.00
USB-CBL-AB3	Standard 3-ft. (0.9m) USB 2.0 cable, A-type connector to B-type connector, used to connect personal computer to any <i>C-more</i> touch panel for setup and programming. (Note: Touch panels require a power source for configuration and operation.)	\$7.50
USB-CBL-AB6	Standard 6-ft. (1.8m) USB 2.0 cable, A-type connector to B-type connector, used to connect personal computer to any <i>C-more</i> touch panel for setup and programming. (Note: Touch panels require a power source for configuration and operation.)	\$9.50
USB-CBL-AB10	Standard 10-ft (3 meter) USB 2.0 cable, A-type connector to B-type connector, used to connect personal computer to any <i>C-more</i> touch panel for setup and programming. (Note: Touch panels require a power source for configuration and operation.)	\$18.00
USB-CBL-AB15	Standard 15-ft. (4.6m) USB 2.0 cable, A-type connector to B-type connector, used to connect personal computer to any <i>C-more</i> touch panel for setup and programming. (Note: Touch panels require a power source for configuration and operation.)	\$22.50

C-more Selection Guide & Specifications

Model	6" TFT color w/ base features	6" TFT color w/ full features	7" TFT color w/ base features	7" TFT color w/ full features
Part Number	EA9-T6CL-R	EA9-T6CL	EA9-T7CL-R	EA9-T7CL
Price	\$499.00	\$699.00	\$465.00	\$540.00
Display Actual Size and Type	5.7" TFT color		7.0" TFT color	
Display Viewing Area	4.54" x 3.40" [115.2 mm x 86.4 mm]		6.00" x 3.60" [152.4 mm x 91.4 mm]	
Weight	1.56 lb [710g]	1.59 lb [720g]	1.46 lb [660g]	1.48 lb [670g]
Screen Pixel	320 x 240 (QVGA)		800 x 480 (WVGA)	
Display Brightness	280 nits (typ)		350 nits (typ)	
LCD Panel Dot Pitch	0.18 mm x 0.18 mm		0.190 mm x 0.190 mm	
Color Scale	65,536 colors			
Backlight Average Lifetime*	50,000 hours @ 25°C			
Touch Panel Type**	Four-wire analog resistive, single touch			
Project Memory	26MB			
Number of Screens	Up to 999 screens – limited by project memory			
Realtime Clock	Realtime Clock Built into panel, backed up for 30 days at 25°C			
Calendar - Month / Day / Year	Yes - monthly deviation 60 sec (Reference)			
Serial Port 1	15-pin D-sub female - RS232C, RS-422/485			
Serial Port 2	N/A	3-wire terminal block - RS-485	N/A	3-wire terminal block - RS-485
Serial Port 3	N/A	RJ-12 modular jack - RS-232C	N/A	RJ-12 modular jack - RS-232C
USB Port - Type B	USB 2.0 High speed (480 Mbps) Type B - Download/Program			
USB Port - Type A	USB 2.0 High speed (480 Mbps) Type A -for USB device options			
Ethernet Port	N/A	Ethernet Port Ethernet 10/100 Base-T, auto MDI/MDI-X		
Audio Line Out	N/A	3.5 mm mini jack – requires amplifier and speaker(s)	N/A	3.5 mm mini jack – requires amplifier and speaker(s)
Mic In (Future)	N/A	3.5 mm mini jack	N/A	3.5 mm mini jack
SD Card Slot	1 slot supports max 2 GB (SD,) max 32 GB (SDHC)			
HDMI Video Out	N/A			
HDMI Supported Resolution	N/A			
Supply Power	10.2-26.4 VDC Class 2 or SELV (Safety Extra-Low Voltage) Circuit or Limited Energy Circuit (LEC), or use the AC/DC Power Adapter, EA-AC, to power the touch panel from a 100-240 VAC, 50/60 Hz power source. Reverse Polarity Protected			
Power Consumption	16.0 W 1.30 A @ 12VDC 0.66 A @ 24VDC			
Internal Fuse (non-replaceable)	4.0 A			
Altitude	Up to 2000m (6562 ft)			
Operating Temperature	0 to 50 °C (32 to 122 °F) Maximum surrounding air temperature rating: 50°C (122°F) IEC 60068-2-14 (Test Nb, Thermal Shock)			
Storage Temperature	-20 to +60°C (-4 to +140 °F) IEC 60068-2-1 (Test Ab, Cold) IEC 60068-2-2 (Test Bb, Dry Heat) IEC 60068-2-14 (Test Na, Thermal Shock)			
Humidity	5–95% RH (non-condensing)			
Environment	For use in Pollution Degree 2 environment, no corrosive gases permitted			
Noise Immunity	(EN61131-2), EN61000-4-2 (ESD), EN61000-4-3 (RFI), EN61000-4-4 (FTB), EN61000-4-5 (Serge), EN61000-4-6 (Conducted) EN61000-4-8 (Power frequency magnetic field immunity) (Local Test) RFI, (145MHz, 440MHz 10W @ 10cm), Impulse 1000V @ 1µs pulse			
Withstand Voltage	1000 VAC, 1 min. (FG to Power supply)			
Insulation Resistance	> 10M ohm @ 500VDC (FG to Power supply)			
Vibration	IEC60068-2-6 (Test Fc)			
Shock	IEC60068-2-27 (Test Ea)			
Emission	EN55011 Class A (Radiated RF emission)			
Enclosure	NEMA 250 type 4/4X indoor use only UL50 type 4X indoor use only IP-65 indoor use only (When mounted correctly)		NEMA 250 type 4/4X indoor use only UL50 type 4X indoor use only IP-65 (not tested by UL) (When mounted correctly)	
Agency Approvals	UL508, E157382 CE (EN61131-2), RoHS (2011/65/EU) CUL Canadian C22.2		UL61010, E157382 CE (EN61131-2), RoHS (2011/65/EU) CUL Canadian C22.2	
NOTES:	*The backlight average lifetime is defined as the average usage time it takes before the brightness becomes 50% of the initial brightness. The lifetime of the backlight depends on the ambient temperature. The lifetime will decrease under low or high temperature usage. **The touchscreen is designed to respond to a single touch. If it is touched at multiple points at the same time, an unexpected object may be activated.			

C-more Selection Guide & Specifications

Model	8" TFT color w/ full features	10" TFT color w/ full features	10" TFT color Widescreen w/ full features
Part Number	EA9-T8CL	EA9-T10CL	EA9-T10WCL
Price	\$999.00	\$1,290.00	\$685.00
Display Actual Size and Type	8.4" TFT color	10.4" TFT color	10.1" TFT color
Display Viewing Area	6.71" x 5.03" [170.4 mm x 127.8mm]	8.31" x 6.24" [211.2 mm x 158.4 mm]	8.77" x 4.93" [222.7 mm x 125.3 mm]
Weight	2.93 lb [1330g]	4.19 lb [1900g]	2.43 lb [1100g]
Screen Pixel	800 x 600 (SVGA)		1024 x 600 (WSVGA)
Display Brightness	310 nits (typ)	280 nits (typ)	240 nits (typ)
LCD Panel Dot Pitch	0.213 mm x 0.213 mm	0.264 mm x 0.264 mm	0.218 mm x 0.209 mm
Color Scale	65,536 colors		
Backlight Average Lifetime*	50,000 hours @ 25°C		
Touch Panel Type**	Four-wire analog resistive, single touch		
Project Memory	26MB		
Number of Screens	Up to 999 screens – limited by project memory		
Realtime Clock	Realtime Clock Built into panel, backed up for 30 days at 25°C		
Calendar - Month / Day / Year	Yes - monthly deviation 60 sec (Reference)		
Serial Port 1	15-pin D-sub female - RS232C, RS-422/485		
Serial Port 2	3-wire terminal block - RS-485		
Serial Port 3	RJ-12 modular jack - RS-232C		
USB Port - Type B	USB 2.0 High speed (480 Mbps) Type B - Download/Program		
USB Port - Type A	USB 2.0 High speed (480 Mbps) Type A -for USB device options		
Ethernet Port	Ethernet Port Ethernet 10/100 Base-T, auto MDI/MDI-X		
Audio Line Out	3.5 mm mini jack – requires amplifier and speaker(s)		
Mic In (Future)	3.5 mm mini jack		
SD Card Slot	1 slot supports max 2 GB (SD), max 32 GB (SDHC)		
HDMI Video Out	N/A		
Supply Power	10.2-26.4 VDC Class 2, Use Class2 and SELV (Safety Extra-Low Voltage) Circuit and Limited Energy Circuit (LEC), or use the AC/DC Power Adapter, EA-AC, to power the touch panel from a 100-240 VAC, 50/60 Hz power source. Reverse Polarity Protected		
Power Consumption	18.0 W 1.50 A @ 12VDC 0.75 A @ 24VDC	17.0W 1.42A @ 12 VDC 0.71A @ 24 VDC	
Internal Fuse (non-replaceable)	6.3 A		
Altitude	Up to 2000m (6562 ft)		
Operating Temperature	0 to 50 °C (32 to 122 °F) Maximum surrounding air temperature rating: 50°C (122°F) IEC 60068-2-14 (Test Nb, Thermal Shock)		
Storage Temperature	-20 to +60°C (-4 to +140°F) IEC 60068-2-1 (Test Ab, Cold) IEC 60068-2-2 (Test Bb, Dry Heat) IEC 60068-2-14 (Test Na, Thermal Shock)		
Humidity	5–95% RH (non-condensing)		
Environment	For use in Pollution Degree 2 environment, no corrosive gases permitted		
Noise Immunity	(EN61131-2), EN61000-4-2 (ESD), EN61000-4-3 (RFI), EN61000-4-4 (FTB), EN61000-4-5 (Serge), EN61000-4-6 (Conducted) EN61000-4-8 (Power frequency magnetic field immunity) (Local Test) RFI, (145MHz, 440Mhz 10W @ 10cm), Impulse 1000V @ 1µs pulse		
Withstand Voltage	1000 VAC, 1 min. (FG to Power supply)		
Insulation Resistance	> 10M ohm @ 500VDC (FG to Power supply)		
Vibration	IEC60068-2-6 (Test Fc)		
Shock	IEC60068-2-27 (Test Ea)		
Emission	EN55011 Class A (Radiated RF emission)		
Enclosure	NEMA 250 type 4/4X indoor use only UL50 type 4X indoor use only IP-65 indoor use only (When mounted correctly)		
Agency Approvals	UL508, E157382 CE (EN61131-2), RoHS (2011/65/EU) CUL Canadian C22.2		
NOTES:	*The backlight average lifetime is defined as the average usage time it takes before the brightness becomes 50% of the initial brightness. The lifetime of the backlight depends on the ambient temperature. The lifetime will decrease under low or high temperature usage. **The touchscreen is designed to respond to a single touch. If it is touched at multiple points at the same time, an unexpected object may be activated.		

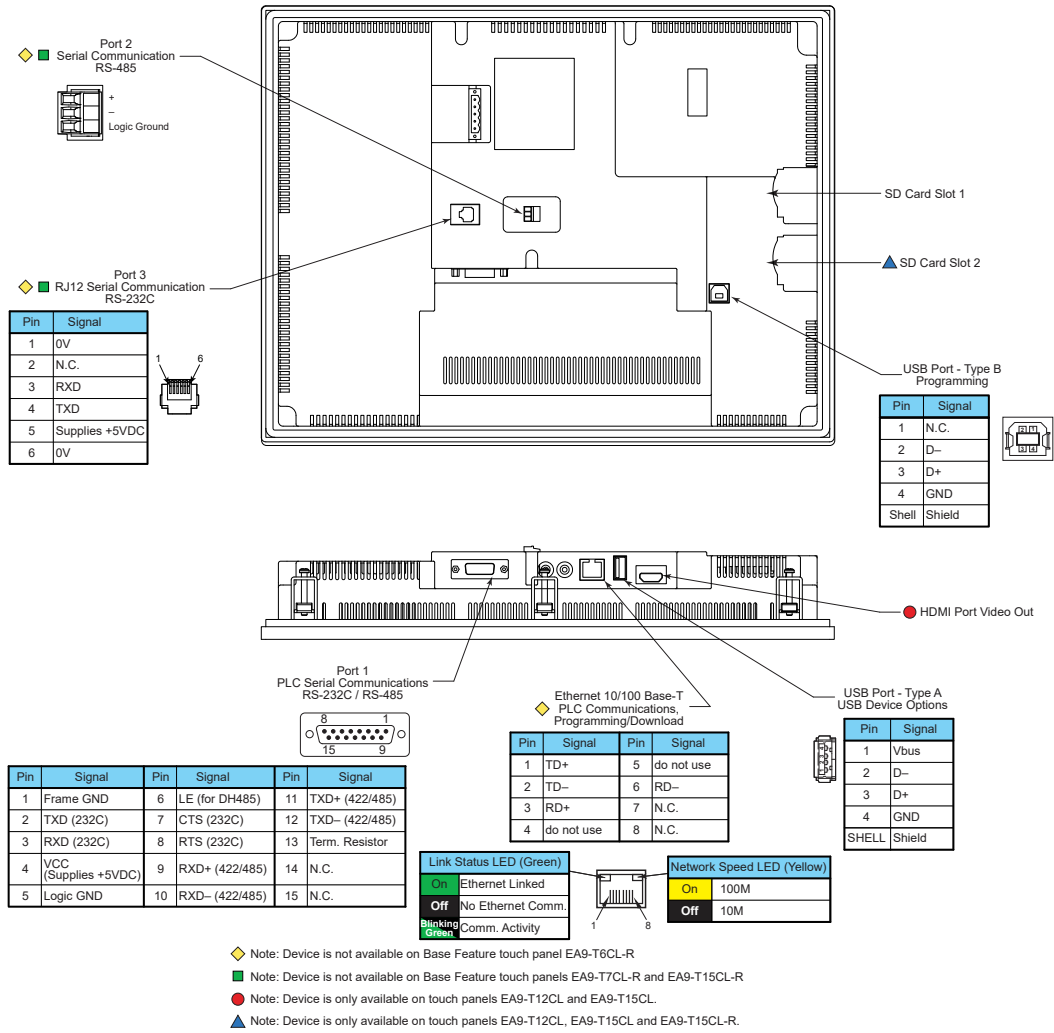
C-more Selection Guide & Specifications

Model	12" TFT color w/ full features	15" TFT color w/ base features	15" TFT color w/ full features
Part Number	EA9-T12CL	EA9-T15CL-R	EA9-T15CL
Price	\$1,790.00	\$1,299.00	\$1,999.00
Display Actual Size and Type	12.1" TFT color	15.0" TFT color	
Display Viewing Area	9.69" x 7.26" [246.0 mm x 184.5 mm]	11.97" x 8.98" [304.1 mm x 228.0 mm]	
Weight	4.89 lb [2200g]	6.46 lb (2930g)	6.50 lb [2950g]
Screen Pixel	800 x 600 (SVGA)	1024 x 768 (XGA)	
Display Brightness	280 nits (typ)		
LCD Panel Dot Pitch	0.3075 mm x 0.3075 mm	0.297 mm x 0.297 mm	
Color Scale	65,536 colors		
Backlight Average Lifetime*	50,000 hours @ 25°C		
Touch Panel Type**	Four-wire analog resistive, single touch		
Project Memory	82MB		
Number of Screens	Up to 999 screens – limited by project memory		
Realtime Clock	Realtime Clock Built into panel, backed up for 30 days at 25°C		
Calendar - Month / Day / Year	Yes - monthly deviation 60 sec (Reference)		
Serial Port 1	15-pin D-sub female - RS232C, RS-422/485		
Serial Port 2	3-wire terminal block - RS-485	N/A	3-wire terminal block - RS-485
Serial Port 3	RJ-12 modular jack - RS-232C	N/A	RJ-12 modular jack - RS-232C
USB Port - Type B	USB 2.0 High speed (480 Mbps) Type B - Download/Program		
USB Port - Type A	USB 2.0 High speed (480 Mbps) Type A -for USB device options		
Ethernet Port	Ethernet Port Ethernet 10/100 Base-T, auto MDI/MDI-X		
Audio Line Out	3.5 mm mini jack – requires amplifier and speaker(s)	N/A	3.5 mm mini jack – requires amplifier and speaker(s)
Mic In (Future)	3.5 mm mini jack	N/A	3.5 mm mini jack
SD Card Slot	2 slots support max 2 GB (SD), max 32 GB (SDHC)		
HDMI Video Out	HDMI Type A Port	N/A	HDMI Type A Port
HDMI Supported Resolution	800 x 600 (SVGA)	N/A	1024 x 768 (XGA)
Supply Power	10.2-26.4 VDC Class 2, Use Class2 and SELV (Safety Extra-Low Voltage) Circuit and Limited Energy Circuit (LEC), or use the AC/DC Power Adapter, EA-AC, to power the touch panel from a 100-240 VAC, 50/60 Hz power source. Reverse Polarity Protected		
Power Consumption	21.0 W 1.75 A @ 12VDC 0.88 A @ 24VDC	29.0 W 2.40 A @ 12VDC 1.20 A @ 24VDC	
Internal Fuse (non-replaceable)	6.3 A		
Altitude	Up to 2000m (6562 ft)		
Operating Temperature	0 to 50 °C (32 to 122 °F) Maximum surrounding air temperature rating: 50°C (122°F) IEC 60068-2-14 (Test Nb, Thermal Shock)		
Storage Temperature	-20 to +60°C (-4 to +140°F) IEC 60068-2-1 (Test Ab, Cold) IEC 60068-2-2 (Test Bb, Dry Heat) IEC 60068-2-14 (Test Na, Thermal Shock)		
Humidity	5–95% RH (non-condensing)		
Environment	For use in Pollution Degree 2 environment, no corrosive gases permitted		
Noise Immunity	(EN61131-2), EN61000-4-2 (ESD), EN61000-4-3 (RFI), EN61000-4-4 (FTB), EN61000-4-5 (Serge), EN61000-4-6 (Conducted) EN61000-4-8 (Power frequency magnetic field immunity) (Local Test) RFI, (145MHz, 440Mhz 10W @ 10cm), Impulse 1000V @ 1µs pulse		
Withstand Voltage	1000 VAC, 1 min. (FG to Power supply)		
Insulation Resistance	> 10M ohm @ 500VDC (FG to Power supply)		
Vibration	IEC60068-2-6 (Test Fc)		
Shock	IEC60068-2-27 (Test Ea)		
Emission	EN55011 Class A (Radiated RF emission)		
Enclosure	NEMA 250 type 4/4X indoor use only UL50 type 4X indoor use only IP-65 indoor use only (When mounted correctly)		
Agency Approvals	UL508, E157382 CE (EN61131-2), RoHS (2011/65/EU) CUL Canadian C22.2		

NOTES: *The backlight average lifetime is defined as the average usage time it takes before the brightness becomes 50% of the initial brightness. The lifetime of the backlight depends on the ambient temperature. The lifetime will decrease under low or high temperature usage.

**The touchscreen is designed to respond to a single touch. If it is touched at multiple points at the same time, an unexpected object may be activated.

C-more Communication Ports



Ethernet Port

The Ethernet port has several uses:

- Download program to panel
- Communicate to PLCs/PCs
- Send e-mail
- Access FTP server
- Act as a Web server
- Remote Internet Access

The Ethernet port has an RJ-45 8-wire modular connector with green and yellow LEDs.

- The yellow LED indicates network speed; off for a 10 Mbps connection and illuminated for a 100 Mbps connection.
- The green LED indicates link status and illuminates when a link is established.

Note: EA6-T6CL-R does not include an Ethernet port, and does not have these capabilities.

USB Port B

Program *C-more* via the USB programming port. It's fast and easy, with no baud rate settings, parity, or stop bits to worry about. We stock standard USB cables for your convenience. USB Port B can be used to upload or download projects to and from a PC.

USB Port A

The Universal Serial Bus (USB) Port A is a standard feature for all models and can be used to connect various USB HID (Human Input Device) devices to the panel, such as:

- USB pen drives, (USB-FLASH)
- USB keyboards
- USB barcode scanners
- USB card scanners

C-more can log data to the USB pen drive as well as load projects to the panel from the pen drive. You can also back up project files and panel firmware.

Sound Interface (Audio Line Out)

When attached to an amplifier and speaker(s), *C-more* can play warning sounds or pre-recorded messages such as: "conveyor is jammed". *C-more* supports WAV type files. The output is stereo.

Serial Port

Port 1 - Connect to your serial controller network via Port 1. Port 1 is a 15-pin port that supports RS-232 or RS-422/485.

Port 2 - Connect your RS-485 network via Port 2. Port 2 is provided with a 3-wire removable terminal block.

Port 3 - Connect to your RS-232C device via Port 3. Port 3 is an RJ12 connection.

HDMI Video Out

EA9-T12CL and EA9-T15CL include an HDMI Type A port to provide video output to a projector or remote monitor.

C-more Communication Protocols & Cables

Compatibility Table			
PLC Family	Model	Protocols	
Allen-Bradley	MicroLogix 1000, 1100, 1200, 1400, 1500, SLC 5-01/02/03	DH485/AIC/AIC+	
	MicroLogix 1000, 1100, 1200, 1400 and 1500 SLC 5-03/04/05	DF1 Half Duplex; DF1 Full Duplex	
	ControlLogix™, CompactLogix™, FlexLogix™ PLC-5	DF1 Full Duplex	
	ControlLogix, CompactLogix, FlexLogix - Tag Based	DF1 Half Duplex; DF1 Full Duplex	
	ControlLogix, CompactLogix, FlexLogix - Generic I/O Messaging	EtherNet/IP Server	
	ControlLogix, CompactLogix, FlexLogix - Tag Based	EtherNet/IP Client	
	Micrologix 1100, 1400 & SLC5/05, all via native Ethernet port		
	MicroLogix 1000, 1100, 1200, 1400, 1500 & SLC 5-03/04/05, all via ENI Adapter	Modbus RTU	
Modbus RTU	Modbus RTU devices	Modbus RTU	
Modbus TCP/IP	Modbus TCP/IP devices	Modbus TCP/IP	
GE	90/30, 90/70, Micro 90, VersaMax Micro	SNPX	
	90/30, Rx3i	S RTP Ethernet	
Mitsubishi	FX Series	FX Direct	
	Q02, Q02H, Q06H, Q12H, Q25H	Q CPU	
	Q, QnA Serial	QnA Serial	
	Q, QnA Ethernet	QnA Ethernet	
Omron	C200 Adapter, C500	Host Link	
	CJ1/CS1 Serial, CJ1/CS1 Ethernet	FINs	
Modicon	984 CPU, Quantum 113 CPU, AEG Modicon Micro Series 110 CPU: 311-xx, 411-xx, 512-xx, 612-xx	Modbus RTU	
Siemens	S7-200 CPU, RS-485 Serial	PPI	
	S7-200 CPU, S7-300 CPU, S7-400, S7-1200 CPU; Ethernet	Ethernet ISO over TCP	
Productivity Series	all	AutomationDirect P3000 Serial AutomationDirect P3000 Ethernet	
Do-more	all	Do-more Serial Do-more Ethernet	
CLICK	all	AutomationDirect Modbus (CLICK)	
DirectLOGIC	DL05/DL06	all	K-Sequence <i>Direct</i> NET Modbus (Koyo addressing)
		H0-ECOM/H0-ECOM100	<i>Direct</i> LOGIC Ethernet
	DL105	all	K-Sequence
		D2-230	K-Sequence
	DL205	D2-240	K-Sequence
		D2-250/D2-250-1/D2-260	<i>Direct</i> NET
			K-Sequence <i>Direct</i> NET Modbus (Koyo addressing)
		D2-240/D2-250-1/D2-260 using D2-DCM	Modbus (Koyo addressing)
		H2-ECOM/H2-ECOM100	<i>Direct</i> LOGIC Ethernet
		DL305	D3-330/330P (Requires the use of a Data Communications Unit)
	D3-340		<i>Direct</i> NET
	D3-350		K-Sequence <i>Direct</i> NET Modbus (Koyo addressing)
			<i>Direct</i> NET Modbus (Koyo addressing)
	D3-350 using D3-DCM		Modbus (Koyo addressing)
	DL405	D4-430	K-Sequence <i>Direct</i> NET
		D4-440	K-Sequence <i>Direct</i> NET
		D4-450	K-Sequence <i>Direct</i> NET Modbus (Koyo addressing)
			<i>Direct</i> NET Modbus (Koyo addressing)
		All with D4-DCM	<i>Direct</i> NET Modbus (Koyo addressing)
		H4-ECOM/H4-ECOM100	<i>Direct</i> LOGIC Ethernet
	H2-WinPLC (Think & Do) Live V5.2 or later and Studio any version		Think & Do Modbus RTU (serial port)
	H2-WinPLC (Think & Do) Live V5.5.1 or later and Studio V7.2.1 or later		Think & Do Modbus TCP/IP (Ethernet port)

Cable Description	Cable Part Number	Price
AutomationDirect Productivity Series, Do-more, CLICK, <i>Direct</i> LOGIC PLC RJ-12 port, DL05, DL06, DL105, DL205, D3-350, D4-450 & H2-WinPLC (RS-232C)	EA-2CBL	\$20.00
<i>Direct</i> LOGIC (VGA Style) 15-pin port, DL06, D2-250 (250-1), D2-260 (RS-232C)	EA-2CBL-1	\$20.00
<i>Direct</i> LOGIC PLC RJ-11 port, D3-340 (RS-232C)	EA-3CBL	\$20.00
<i>Direct</i> LOGIC DL405 PLC 15-pin D-sub port, DL405 (RS-232C)	EA-4CBL-1	\$20.00
<i>Direct</i> LOGIC PLC 25-pin D-sub port, DL405, D3-350, DL305, DCU and all DCM's (RS-232C)	EA-4CBL-2	\$20.00
Allen-Bradley MicroLogix 1000, 1100, 1200, 1400 & 1500 (RS-232C)	EA-MLOGIX-CBL	\$30.00
Allen-Bradley SLC 5-03/04/05 ControlLogix, CompactLogix, FlexLogix, DF1 port (RS-232C)	EA-SLC-232-CBL	\$20.00
Allen-Bradley PLC-5 DF1 port (RS-232C)	EA-PLC5-232-CBL	\$20.00
Allen-Bradley SLC 500 DH485 port (RS-485A)	EA-DH485-CBL	\$20.00
GE 90/30, 90/70, Micro 90, VersaMax Micro 15-pin D-sub port (RS-422A)	EA-90-30-CBL	\$20.00
MITSUBISHI FX Series 25-pin port (RS-422A)	EA-MITSU-CBL	\$20.00
MITSUBISHI FX Series 8-pin mini-DIN (RS-422A)	EA-MITSU-CBL-1	\$20.00
OMRON Host Link C200 Adapter, C500 (RS-232C)	EA-OMRON-CBL	\$20.00

Example Cables:

EA-2CBL



EA-2CBL-1

