

# SHIMPO Handheld Tachometers

## DT-200LR Series Combination Laser Tachometers

The DT-200LR Series Combination Contact/Non-Contact Laser Handheld Tachometers enable precise non-contact RPM measurement up to 20 feet away. The Series DT-200LR digital tachometers incorporate laser technology yet retain rugged construction and reliable quality components. These instruments feature a field-upgradeable contact adapter for linear rate measure, conveniently allowing both non-contact and contact measurements. These user friendly, value-packed units feature memory storage, quick adjustment units knob, length functions, retrieval of last, maximum and minimum values. Each unit comes standard with a free NIST certificate\*. Units are available with an LCD or vibrant red LED display.

### Features

- Outstanding accuracy for the strictest applications
- Sophisticated laser beam detection to 20 feet provides operator safety during testing
- Rugged die-cast aluminum housing enables usage in the harshest conditions
- Wide field selection of units in both instantaneous rate as well as totalized length satisfies a multitude of user requirements
- Large 5-digit display aids user visibility
- Expansive 10 measurement memory capacity allows quick retrieval of stored data plus additional last, maximum & minimum values
- Long battery life (25-40 hrs. continuous use)
- Compact, ergonomic design allows easy grip
- Rear threaded inserts (1/4-20 x 5/16 in.) provide additional mounting options
- Available display options of either LCD or vibrant, bright red LED
- CE compliant. Includes free N.I.S.T. certificate.\*
- 2-year warranty



DT-200LR Series Handheld Tachometers		
Part Number	Description	Price
DT-205LR	Handheld tachometer, non-contact / contact, 5-digit LCD display	\$291.00
DT-207LR	Handheld tachometer, non-contact / contact, 5-digit LED display	\$291.00

### Included Accessories

Each DT-200LR Series Handheld Tachometer includes a contact adapter, (2) 1/2-inch cone adapters, a 1/2-inch funnel adapter, a 6-inch circumference measuring wheel, a 3.5-inch extension shaft, 1-inch x 7.75-inch reflective tape, (2) AA alkaline batteries and carrying case. Additional and replacement accessories can be found on the following page.

*\* NIST certificates are valid one year from the date the unit ships from Shimpo to AutomationDirect. In order to maintain stock levels for immediate availability, up to six-month "shelf time" may have elapsed before a unit is received by the customer.*

*Calibration services are not available from AutomationDirect. Contact Shimpo Instruments at (800) 237-7079 or www.shimpoint.com/contact-us for any calibration needs.*



# SHIMPO Handheld Tachometers

## DT-200LR Series Combination Laser Tachometers

DT-200LR Series Specifications	
<b>Display Range</b>	6 - 99,999 RPM
<b>Accuracy</b>	±1 RPM @ 6 - 8,300 RPM ±2 RPM @ 8,300 - 25,000 RPM ±0.006% of reading ±1 digit (±6 RPM max.) 25,000 - 99,999 RPM
<b>Display</b>	DT-205A – 5-digit 0.47 in. (12 mm) high LCD DT-207A – 5-digit 0.40 in. (10 mm) high LED
<b>Measuring Units</b>	RPM (using included contact adapter) YPM, mPM, FPM, IPM, and Length: YRD, m, FT and IN Use wheel with 200L adapter
<b>Measuring Distance</b>	1 in. (25.4 mm) to 20 feet (6m)
<b>Memory System</b>	13 readings are stored in memory and retained for 5 minutes (last, max., min., and 10 extra measurements)
<b>Detection</b>	Laser diode / contact
<b>Update Time</b>	1 second (typical)
<b>Power Requirement</b>	2 AA 1.5V batteries (Life: Approx. 25 hrs.)
<b>Operating Temperature</b>	32 - 113 °F (0 - 45 °C)
<b>Construction</b>	Die-cast aluminum housing
<b>Weight</b>	0.8 lb (365 g)
<b>Agency Approvals</b>	CE
<b>Dimensions</b>	6.6 in. L x 2.4 in. W x 1.8 in. H (167.5 mm x 60 mm x 46 mm) With contact adapter: Length = 8.25 in. (209 mm)

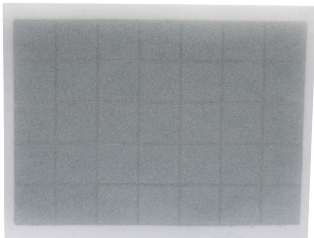


### Accessories

DT-200LR Series Accessories		
Part Number	Description	Price
<b>DT-CONE</b>	Replacement standard cone adapter for Shimpo DT series handheld tachometers, 1/2 inch diameter	\$6.75
<b>DT-ADP-200LR</b>	Replacement contact adapter for Shimpo DT-205LR or DT-207LR handheld tachometers	\$73.00
<b>EXT-SHAFT</b>	Replacement extension shaft for Shimpo DT series handheld tachometers, 3-1/2 inch length	\$11.50
<b>DT-FPM-6</b>	Replacement measuring wheel for Shimpo DT series tachometers, 6 inch circumference	\$31.50
<b>DT-FPM-12</b>	Measuring wheel for Shimpo DT series handheld tachometers, 12 inch circumference	\$52.00
<b>DT-FUNNEL</b>	Replacement standard funnel adapter for Shimpo DT series tachometers, 1/2 inch diameter	\$6.75
<b>DT-TAB</b>	Reflective tabs, sheet of (35) 1/2-inch squares, for use with Shimpo DT-205LR, DT-207LR and PT-110 handheld tachometers	\$3.20
<b>DT-TAPE</b>	Replacement reflective tape strip, 1 x 7-3/4 inch, for use with Shimpo DT-205LR, DT-207LR and PT-110 handheld tachometers	\$2.60



DT-FPM-12



DT-TAB



DT-CONE



DT-FPM-6



DT-ADP-200LR



DT-FUNNEL



DT-TAPE



EXT-SHAFT