

DataWorx Productivity3000 Server

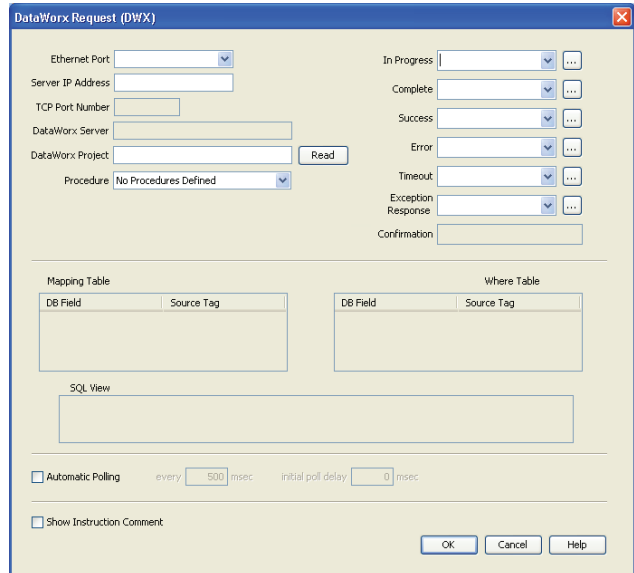
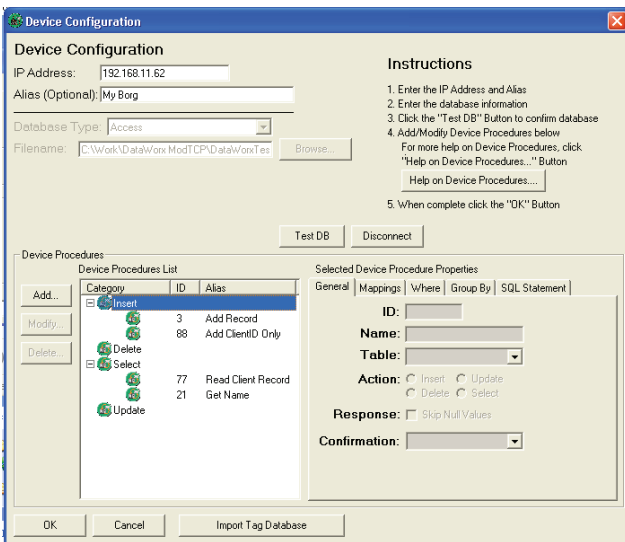
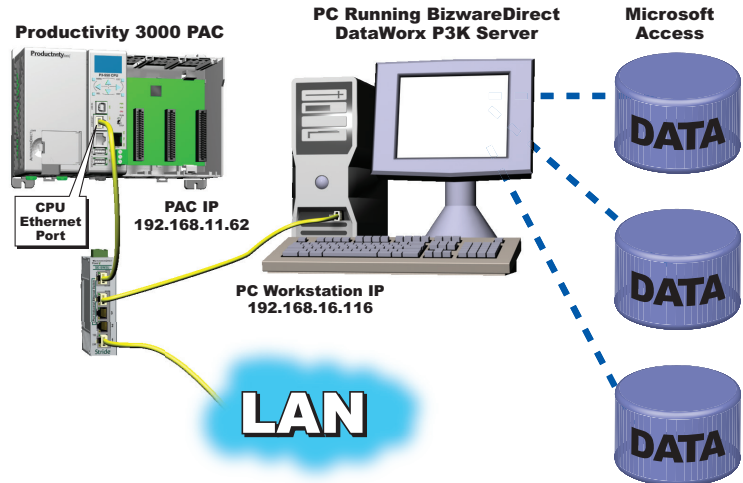
The DataWorx P3K server software maximizes the value of your industrial data by allowing you to collect data and connect your Productivity3000 or Productivity 2000 system to networked database servers. Collect real-time data from the plant floor and store it into a standard Microsoft Access, SQL server or ODBC compatible database.

The unique report-by-exception technology allows direct communication between the Productivity3000/2000 and the database(s). It gives control of the data logging and storage to the CPU so it can send data only when needed, greatly reducing the amount of network traffic.

Connect your Productivity3000/2000 to your Enterprise system

What is it?

DataWorx P3K gives you an inexpensive solution for connecting your Productivity3000 or Productivity2000 controller to enterprise systems by providing direct database interaction. Productivity3000/2000 is able to conduct its own database operations, so records are always accurate and up-to-date. DataWorx P3K connects people to the plant, putting valuable information in the hands of those who need it to make crucial decisions.



Benefits of DataWorx P3K

- Makes industrial data directly and readily available to those who need it to make organizational decisions
- Allows data to flow freely between plant floor and your IT enterprise system
- Report-by-exception technology eases network traffic
- Gives PAC/PLC complete control over data storage and retrieval
- Easy installation, no database programming necessary
- No SCADA system needed
- Store unlimited amounts of data

Built-in Ladder Instruction

The Productivity3000/2000 has incorporated a DataWorx instruction to simplify the configuration and data transfer between the controller and enterprise network.

```

Enable
          DATAWORX REQUEST
          Ethernet Port CPU-ETH-Ext          In Progress bInProgress
          DataWorx Server My Borg           Complete bComplete
          IP Address 192.168.116.116        1
          Port 502                          Success bSuccess
          Procedure Name Read Client Record 1
          Procedure ID 77                    Error bError
          Procedure Type SELECT              0
          No Automatic Polling              Timeout bTimeout
          DB Map Field Map Tag               Value 0
          Clients.Age nAge                   9 Exception
          Clients.Weight nWeight             52 Response String strException
          Clients.Height nHeight             52
          Clients.ClientID nClientID         3333 Confirmation nConfirmation2
          Clients.Name strName               Corey 1
          DB Where Field Where Tag           Value
          Clients.RecordID nRecordID        2
          DataWorx Export File C:\Bizware\DWRX Test.dux
    
```

Practical Applications

- Enable your industrial devices to track plant-floor progress and maintain a precise inventory to increase efficiency and accuracy.
- Store, set and change recipes to improve reliability in operations using multiple formulas and set-points.
- Log valuable production data into a data base for convenient storage, easy retrieval and organized displays.
- Archive test data in a secure database with built-in date/time stamping features to satisfy quality assurance or audit procedures.