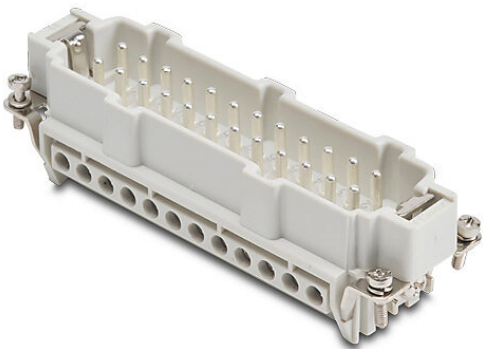


ZP-MC24B-1-MS024 Cut Sheet



ZIPport male insert, connector housing size 24B, 24-pole, screw terminals, accepts wire size 20 - 14 AWG, 16 amp, 600 VAC/VDC, poles numbered 1 to 24. For use with ZIPport multi-wire housings.

For complete product information, please see this item on our store at the following link:



<https://www.automationdirect.com/pn/ZP-MC24B-1-MS024>

Technical Specifications

Brand	ZIPport
Item	Male Insert
Connector Housing Size	24B
Number of Poles	24
Termination Type	Screw terminals
Wire Size	20 - 14 AWG
Amperage Rating	16 amp
Voltage Rating	600 VAC/VDC
Pole Marking	Numbered 1 to 24
For Use With	ZIPport multi-wire housings

Agency Approvals

UL Listed File #	None
UL Recognized File #	E342543
UL Hazardous File #	None
CE	View CE declarations
CSA File #	None
RoHS Status	Yes (See CE Doc)
EU REACH	View EU REACH document