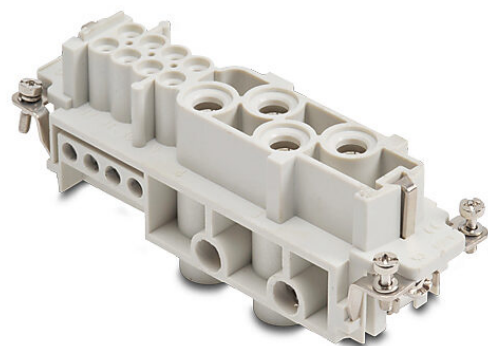


ZP-MC24B-1-FS048 Cut Sheet



ZIPport female insert, connector housing size 24B, 12-pole, screw terminals, accepts wire size 6-16 AWG, 20-14 AWG, 80 amp (4-pole), 16 amp (8-pole), 600 VAC/VDC, poles numbered 1 to 4 and 1 to 8. For use with ZIPport multi-wire housings.

For complete product information, please see this item on our store at the following link:



<https://www.automationdirect.com/pn/ZP-MC24B-1-FS048>

Technical Specifications

Brand	ZIPport
Item	Female Insert
Connector Housing Size	24B
Number of Poles	12
Termination Type	Screw terminals
Wire Size	6-16 AWG, 20-14 AWG
Amperage Rating	80 amp (4-pole), 16 amp (8-pole)
Voltage Rating	600 VAC/VDC
Pole Marking	Numbered 1 to 4 and 1 to 8
For Use With	ZIPport multi-wire housings

Agency Approvals

UL Listed File #	None
UL Recognized File #	E342543
UL Hazardous File #	None
CE	View CE declarations
CSA File #	None
RoHS Status	Yes (See CE Doc)
EU REACH	View EU REACH document

Dimensional Drawings



2D Drawing PDF Link:
<https://cdn.automationdirect.com/static/drawings/ZP-MC24B-1-FS048.pdf>
See store item page for other formats.