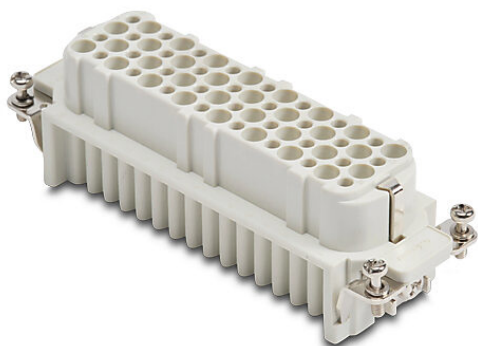


# ZP-MC24B-1-FC064 Cut Sheet



ZIPport female insert, connector housing size 24B, 64-pole, crimped contact, 10 amp, 600 VAC/VDC, poles numbered A to D/1 to 16. For use with ZIPport multi-wire housings. Requires 10 amp female contacts ZP-MC-CC-F10A-xxx.

For complete product information, please see this item on our store at the following link:



<https://www.automationdirect.com/pn/ZP-MC24B-1-FC064>

## Technical Specifications

|                        |  |
|------------------------|--|
| Brand                  | ZIPport                                  |
| Item                   | Female Insert                            |
| Connector Housing Size | 24B                                      |
| Number of Poles        | 64                                       |
| Termination Type       | Crimped contact                          |
| Amperage Rating        | 10 amp                                   |
| Voltage Rating         | 600 VAC/VDC                              |
| Pole Marking           | Numbered A to D/1 to 16                  |
| For Use With           | ZIPport multi-wire housings              |
| Requires               | 10 amp female contacts ZP-MC-CC-F10A-xxx |

## Agency Approvals

|                      |  |
|----------------------|--|
| UL Listed File #     | None                                   |
| UL Recognized File # | E342543                                |
| UL Hazardous File #  | None                                   |
| CE                   | <a href="#">View CE declarations</a>   |
| CSA File #           | None                                   |
| RoHS Status          | Yes (See CE Doc)                       |
| EU REACH             | <a href="#">View EU REACH document</a> |

## Dimensional Drawings



2D Drawing PDF Link:  
<https://cdn.automationdirect.com/static/drawings/ZP-MC24B-1-FC064.pdf>  
See store item page for other formats.