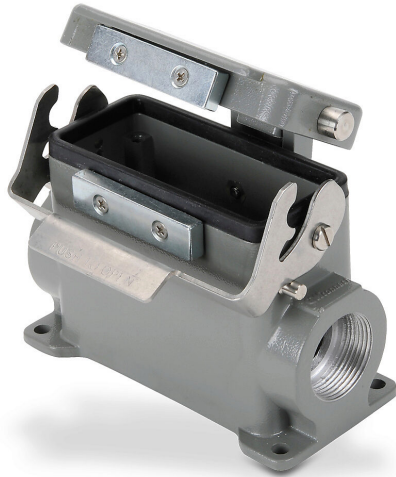


ZP-MC16B-2-SM21CAL Cut Sheet



ZIPport surface mount housing, single lever, automatic closing, connector housing size 16B, (2) Pg 21 threaded holes, high construction, heavy-duty die cast aluminum. For use with ZIPport size 16B 2-peg connector housings.

For complete product information, please see this item on our store at the following link:



<https://www.automationdirect.com/pn/ZP-MC16B-2-SM21CAL>

Technical Specifications

Brand	ZIPport
Item	Housing
Housing Type	Surface mount
Housing Lever Type	Single lever
Attached Cover	Automatic closing
Connector Housing Size	16B
Thread Opening	(2) Pg 21 threaded holes
High Construction	Yes
Material	Heavy-duty die cast aluminum
For Use With	ZIPport size 16B 2-peg connector housings

Agency Approvals

UL Listed File #	None
UL Recognized File #	E342543
UL Hazardous File #	None
CE	View CE declarations
CSA File #	None
RoHS Status	Yes (See CE Doc)
EU REACH	View EU REACH document