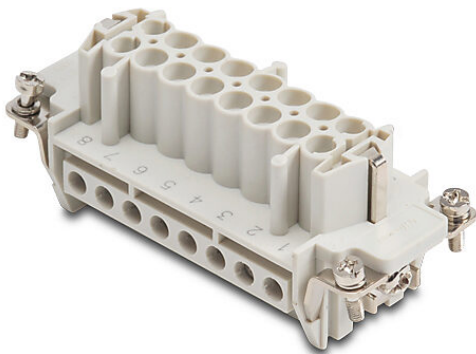


# ZP-MC16B-1-FS016 Cut Sheet



ZIPport female insert, connector housing size 16B, 16-pole, screw terminals, accepts wire size 20-12 AWG, 16 amp, 600 VAC/VDC, poles numbered 1 to 16. For use with ZIPport multi-wire housings.

For complete product information, please see this item on our store at the following link:



<https://www.automationdirect.com/pn/ZP-MC16B-1-FS016>

## Technical Specifications

Brand	ZIPport
Item	Female Insert
Connector Housing Size	16B
Number of Poles	16
Termination Type	Screw terminals
Wire Size	20-12 AWG
Amperage Rating	16 amp
Voltage Rating	600 VAC/VDC
Pole Marking	Numbered 1 to 16
For Use With	ZIPport multi-wire housings

## Agency Approvals

UL Listed File #	None
UL Recognized File #	E342543
UL Hazardous File #	None
CE	<a href="#">View CE declarations</a>
CSA File #	None
RoHS Status	Yes (See CE Doc)
EU REACH	<a href="#">View EU REACH document</a>

## Dimensional Drawings



2D Drawing PDF Link:  
<https://cdn.automationdirect.com/static/drawings/ZP-MC16B-1-FS016.pdf>  
See store item page for other formats.