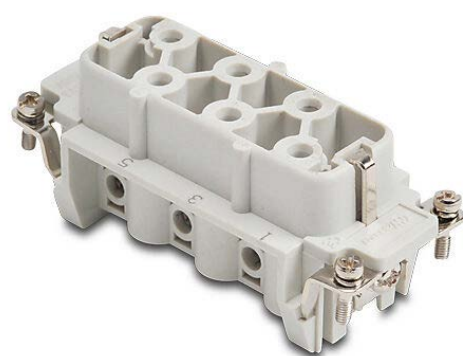


# ZP-MC16B-1-FS006 Cut Sheet



ZIPport female insert, connector housing size 16B, 6-pole, screw terminals, accepts wire size 20 - 10 AWG, 35 amp, 600 VAC/VDC, poles numbered 1 to 6. For use with ZIPport multi-wire housings.

For complete product information, please see this item on our store at the following link:



<https://www.automationdirect.com/pn/ZP-MC16B-1-FS006>

## Technical Specifications

Brand	ZIPport
Item	Female Insert
Connector Housing Size	16B
Number of Poles	6
Termination Type	Screw terminals
Wire Size	20 - 10 AWG
Amperage Rating	35 amp
Voltage Rating	600 VAC/VDC
Pole Marking	Numbered 1 to 6
For Use With	ZIPport multi-wire housings

## Agency Approvals

UL Listed File #	None
UL Recognized File #	E342543
UL Hazardous File #	None
CE	<a href="#">View CE declarations</a>
CSA File #	None
RoHS Status	Yes (See CE Doc)
EU REACH	<a href="#">View EU REACH document</a>
Other	None