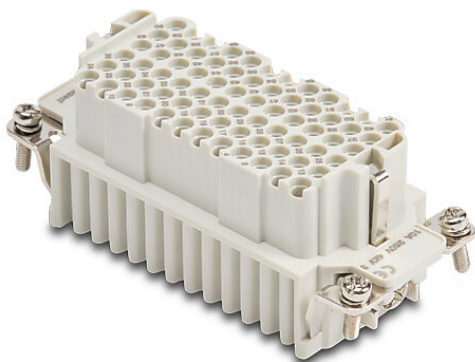


ZP-MC16B-1-FC072 Cut Sheet



ZIPport female insert, connector housing size 16B, 72-pole, crimped contact, 10 amp, 600 VAC/VDC, poles numbered 1 to 72. For use with ZIPport multi-wire housings. Requires 10 amp female contacts ZP-MC-CC-F10A-xxx.

For complete product information, please see this item on our store at the following link:



<https://www.automationdirect.com/pn/ZP-MC16B-1-FC072>

Technical Specifications

Brand	ZIPport
Item	Female Insert
Connector Housing Size	16B
Number of Poles	72
Termination Type	Crimped contact
Amperage Rating	10 amp
Voltage Rating	600 VAC/VDC
Pole Marking	Numbered 1 to 72
For Use With	ZIPport multi-wire housings
Requires	10 amp female contacts ZP-MC-CC-F10A-xxx

Agency Approvals

UL Listed File #	None
UL Recognized File #	E342543
UL Hazardous File #	None
CE	View CE declarations
CSA File #	None
RoHS Status	Yes (See CE Doc)
EU REACH	View EU REACH document

Dimensional Drawings



2D Drawing PDF Link:
<https://cdn.automationdirect.com/static/drawings/ZP-MC16B-1-FC072.pdf>
See store item page for other formats.