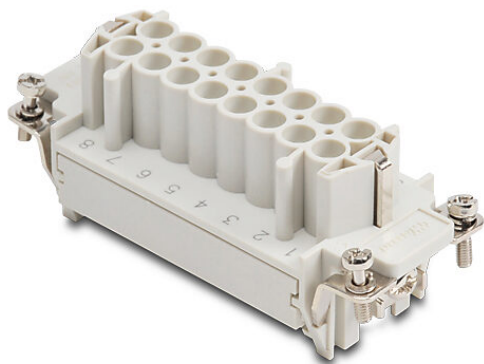


ZP-MC16B-1-FC016 Cut Sheet



ZIPport female insert, connector housing size 16B, 16-pole, crimped contact, 16 amp, 600 VAC/VDC, poles numbered 1 to 16. For use with ZIPport multi-wire housings. Requires 16 amp female contacts ZP-MC-CC-F16A-xxx.

For complete product information, please see this item on our store at the following link:



<https://www.automationdirect.com/pn/ZP-MC16B-1-FC016>

Technical Specifications

Brand	ZIPport
Item	Female Insert
Connector Housing Size	16B
Number of Poles	16
Termination Type	Crimped contact
Amperage Rating	16 amp
Voltage Rating	600 VAC/VDC
Pole Marking	Numbered 1 to 16
For Use With	ZIPport multi-wire housings
Requires	16 amp female contacts ZP-MC-CC-F16A-xxx

Agency Approvals

UL Listed File #	None
UL Recognized File #	E342543
UL Hazardous File #	None
CE	View CE declarations
CSA File #	None
RoHS Status	Yes (See CE Doc)
EU REACH	View EU REACH document