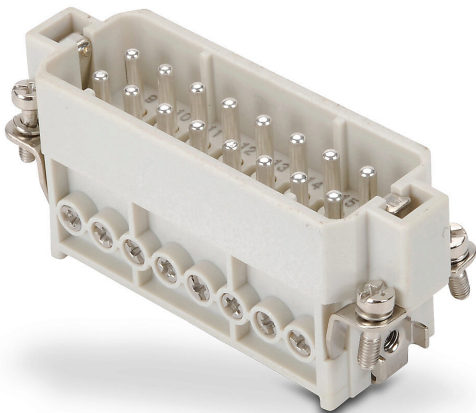


# ZP-MC16A-1-MS016 Cut Sheet



ZIPport male insert, connector housing size 16A, 16-pole, screw terminals, accepts wire size 20-14 AWG, 16 amp, 600 VAC/VDC, poles numbered 1 to 16. For use with ZIPport multi-wire housings.

For complete product information, please see this item on our store at the following link:



<https://www.automationdirect.com/pn/ZP-MC16A-1-MS016>

## Technical Specifications

|                        |                             |
|------------------------|-----------------------------|
| Brand                  | ZIPport                     |
| Item                   | Male Insert                 |
| Connector Housing Size | 16A                         |
| Number of Poles        | 16                          |
| Termination Type       | Screw terminals             |
| Wire Size              | 20-14 AWG                   |
| Amperage Rating        | 16 amp                      |
| Voltage Rating         | 600 VAC/VDC                 |
| Pole Marking           | Numbered 1 to 16            |
| For Use With           | ZIPport multi-wire housings |

## Agency Approvals

|                      |  |
|----------------------|--|
| UL Listed File #     | None                                   |
| UL Recognized File # | E342543                                |
| UL Hazardous File #  | None                                   |
| CE                   | <a href="#">View CE declarations</a>   |
| CSA File #           | None                                   |
| RoHS Status          | Yes (See CE Doc)                       |
| EU REACH             | <a href="#">View EU REACH document</a> |

## Dimensional Drawings



2D Drawing PDF Link:  
<https://cdn.automationdirect.com/static/drawings/ZP-MC16A-1-MS016.pdf>  
See store item page for other formats.