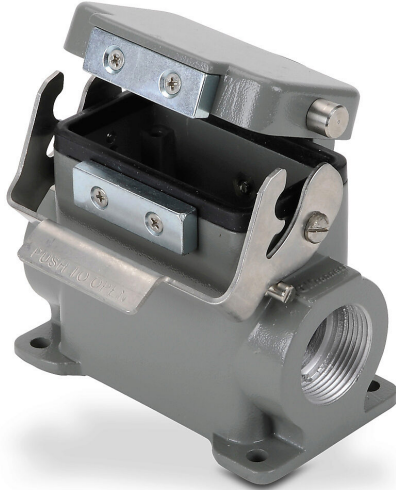


# ZP-MC10B-2-SSM21CA Cut Sheet



ZIPport surface mount housing, single lever, automatic closing, connector housing size 10B, (2) Pg 21 threaded holes, heavy-duty die cast aluminum. For use with ZIPport size 10B 2-peg connector housings.

For complete product information, please see this item on our store at the following link:



<https://www.automationdirect.com/pn/ZP-MC10B-2-SSM21CA>

## Technical Specifications

<b>Brand</b>	ZIPport
<b>Item</b>	Housing
<b>Housing Type</b>	Surface mount
<b>Housing Lever Type</b>	Single lever
<b>Attached Cover</b>	Automatic closing
<b>Connector Housing Size</b>	10B
<b>Thread Opening</b>	(2) Pg 21 threaded holes
<b>High Construction</b>	No
<b>Material</b>	Heavy-duty die cast aluminum
<b>For Use With</b>	ZIPport size 10B 2-peg connector housings

## Agency Approvals

<b>UL Listed File #</b>	None
<b>UL Recognized File #</b>	E342543
<b>UL Hazardous File #</b>	None
<b>CE</b>	<a href="#">View CE declarations</a>
<b>CSA File #</b>	None
<b>RoHS Status</b>	Yes (See CE Doc)
<b>EU REACH</b>	<a href="#">View EU REACH document</a>