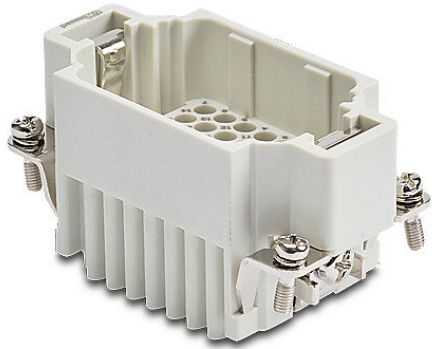


ZP-MC10B-1-MC042 Cut Sheet



ZIPport male insert, connector housing size 10B, 42-pole, crimped contact, 10 amp, 600 VAC/VDC, poles numbered 1 to 42. For use with ZIPport multi-wire housings. Requires 10 amp male contacts ZP-MC-CC-M10A-xxx.

For complete product information, please see this item on our store at the following link:



<https://www.automationdirect.com/pn/ZP-MC10B-1-MC042>

Technical Specifications

Brand	ZIPport
Item	Male Insert
Connector Housing Size	10B
Number of Poles	42
Termination Type	Crimped contact
Amperage Rating	10 amp
Voltage Rating	600 VAC/VDC
Pole Marking	Numbered 1 to 42
For Use With	ZIPport multi-wire housings
Requires	10 amp male contacts ZP-MC-CC-M10A-xxx

Agency Approvals

UL Listed File #	None
UL Recognized File #	E342543
UL Hazardous File #	None
CE	View CE declarations
CSA File #	None
RoHS Status	Yes (See CE Doc)
EU REACH	View EU REACH document