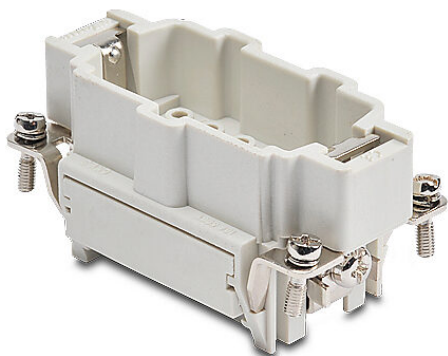


ZP-MC10B-1-MC010 Cut Sheet



ZIPport male insert, connector housing size 10B, 10-pole, crimped contact, 16 amp, 600 VAC/VDC, poles numbered 1 to 10. For use with ZIPport multi-wire housings. Requires 16 amp male contacts ZP-MC-CC-M16A-xxx.

For complete product information, please see this item on our store at the following link:



<https://www.automationdirect.com/pn/ZP-MC10B-1-MC010>

Technical Specifications

| | |
|------------------------|--|
| Brand | ZIPport |
| Item | Male Insert |
| Connector Housing Size | 10B |
| Number of Poles | 10 |
| Termination Type | Crimped contact |
| Amperage Rating | 16 amp |
| Voltage Rating | 600 VAC/VDC |
| Pole Marking | Numbered 1 to 10 |
| For Use With | ZIPport multi-wire housings |
| Requires | 16 amp male contacts ZP-MC-CC-M16A-xxx |

Agency Approvals

| | |
|----------------------|--|
| UL Listed File # | None |
| UL Recognized File # | E342543 |
| UL Hazardous File # | None |
| CE | View CE declarations |
| CSA File # | None |
| RoHS Status | Yes (See CE Doc) |
| EU REACH | View EU REACH document |

Dimensional Drawings



2D Drawing PDF Link:
<https://cdn.automationdirect.com/static/drawings/ZP-MC10B-1-MC010.pdf>
See store item page for other formats.