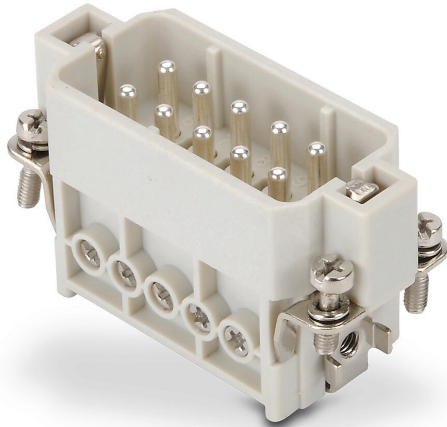


# ZP-MC10A-1-MS010 Cut Sheet



ZIPport male insert, connector housing size 10A, 10-pole, screw terminals, accepts wire size 20 - 14 AWG, 16 amp, 600 VAC/VDC, poles numbered 1 to 10. For use with ZIPport multi-wire housings.

For complete product information, please see this item on our store at the following link:



<https://www.automationdirect.com/pn/ZP-MC10A-1-MS010>

## Technical Specifications

<b>Brand</b>	ZIPport
<b>Item</b>	Male Insert
<b>Connector Housing Size</b>	10A
<b>Number of Poles</b>	10
<b>Termination Type</b>	Screw terminals
<b>Wire Size</b>	20 - 14 AWG
<b>Amperage Rating</b>	16 amp
<b>Voltage Rating</b>	600 VAC/VDC
<b>Pole Marking</b>	Numbered 1 to 10
<b>For Use With</b>	ZIPport multi-wire housings

## Agency Approvals

<b>UL Listed File #</b>	None
<b>UL Recognized File #</b>	E342543
<b>UL Hazardous File #</b>	None
<b>CE</b>	<a href="#">View CE declarations</a>
<b>CSA File #</b>	None
<b>RoHS Status</b>	Yes (See CE Doc)
<b>EU REACH</b>	<a href="#">View EU REACH document</a>