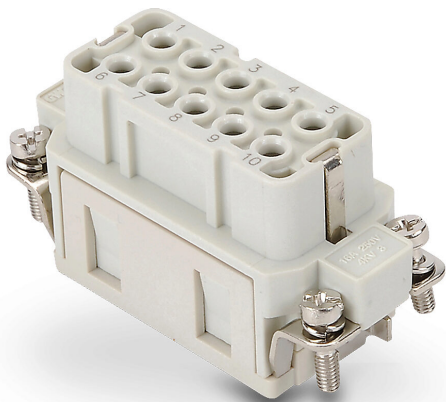


# ZP-MC10A-1-FC010 Cut Sheet



ZIPport female insert, connector housing size 10A, 10-pole, crimped contact, 16 amp, 600 VAC/VDC, poles numbered 1 to 10. For use with ZIPport multi-wire housings. Requires 16 amp female contacts ZP-MC-CC-F16A-xxx.

For complete product information, please see this item on our store at the following link:



<https://www.automationdirect.com/pn/ZP-MC10A-1-FC010>

## Technical Specifications

Brand	ZIPport
Item	Female Insert
Connector Housing Size	10A
Number of Poles	10
Termination Type	Crimped contact
Amperage Rating	16 amp
Voltage Rating	600 VAC/VDC
Pole Marking	Numbered 1 to 10
For Use With	ZIPport multi-wire housings
Requires	16 amp female contacts ZP-MC-CC-F16A-xxx

## Agency Approvals

UL Listed File #	None
UL Recognized File #	E342543
UL Hazardous File #	None
CE	<a href="#">View CE declarations</a>
CSA File #	None
RoHS Status	Yes (See CE Doc)
EU REACH	<a href="#">View EU REACH document</a>

## Dimensional Drawings



2D Drawing PDF Link:  
<https://cdn.automationdirect.com/static/drawings/ZP-MC10A-1-FC010.pdf>  
See store item page for other formats.