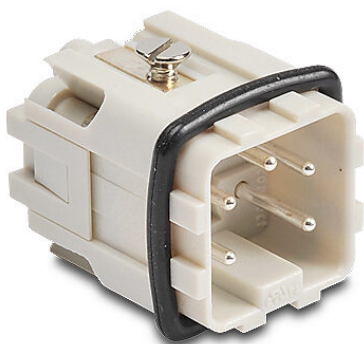


ZP-MC03A-1-MS004 Cut Sheet



ZIPport male insert, connector housing size 3A, 4-pole, screw terminals, accepts wire size 20-14 AWG, 10 amp, 600 VAC/VDC, poles numbered 1 to 4. For use with ZIPport multi-wire housings.

For complete product information, please see this item on our store at the following link:



<https://www.automationdirect.com/pn/ZP-MC03A-1-MS004>

Technical Specifications

Brand	ZIPport
Item	Male Insert
Connector Housing Size	3A
Number of Poles	4
Termination Type	Screw terminals
Wire Size	20-14 AWG
Amperage Rating	10 amp
Voltage Rating	600 VAC/VDC
Pole Marking	Numbered 1 to 4
For Use With	ZIPport multi-wire housings

Agency Approvals

UL Listed File #	None
UL Recognized File #	E342543
UL Hazardous File #	None
CE	View CE declarations
CSA File #	None
RoHS Status	Yes (See CE Doc)
EU REACH	View EU REACH document

Dimensional Drawings



2D Drawing PDF Link:
<https://cdn.automationdirect.com/static/drawings/ZP-MC03A-1-MS004.pdf>
See store item page for other formats.