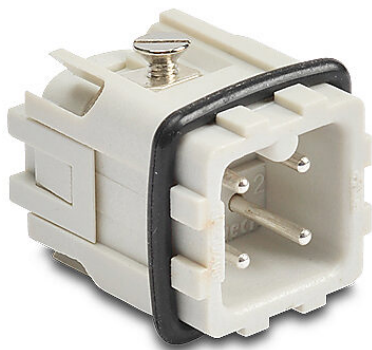


# ZP-MC03A-1-MS003 Cut Sheet



ZIPport male insert, connector housing size 3A, 3-pole, screw terminals, accepts wire size 20-14 AWG, 10 amp, 600 VAC/VDC, poles numbered 1 to 3. For use with ZIPport multi-wire housings.

For complete product information, please see this item on our store at the following link:



<https://www.automationdirect.com/pn/ZP-MC03A-1-MS003>

## Technical Specifications

Brand	ZIPport
Item	Male Insert
Connector Housing Size	3A
Number of Poles	3
Termination Type	Screw terminals
Wire Size	20-14 AWG
Amperage Rating	10 amp
Voltage Rating	600 VAC/VDC
Pole Marking	Numbered 1 to 3
For Use With	ZIPport multi-wire housings

## Agency Approvals

UL Listed File #	None
UL Recognized File #	E342543
UL Hazardous File #	None
CE	<a href="#">View CE declarations</a>
CSA File #	None
RoHS Status	Yes (See CE Doc)
EU REACH	<a href="#">View EU REACH document</a>

## Dimensional Drawings



2D Drawing PDF Link:  
<https://cdn.automationdirect.com/static/drawings/ZP-MC03A-1-MS003.pdf>  
See store item page for other formats.