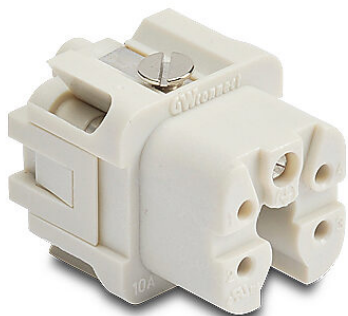


# ZP-MC03A-1-FS004 Cut Sheet



ZIPport female insert, connector housing size 3A, 4-pole, screw terminals, accepts wire size 20 - 14 AWG, 10 amp, 600 VAC/VDC, poles numbered 1 to 4. For use with ZIPport multi-wire housings.

For complete product information, please see this item on our store at the following link:



<https://www.automationdirect.com/pn/ZP-MC03A-1-FS004>

## Technical Specifications

<b>Brand</b>	ZIPport
<b>Item</b>	Female Insert
<b>Connector Housing Size</b>	3A
<b>Number of Poles</b>	4
<b>Termination Type</b>	Screw terminals
<b>Wire Size</b>	20 - 14 AWG
<b>Amperage Rating</b>	10 amp
<b>Voltage Rating</b>	600 VAC/VDC
<b>Pole Marking</b>	Numbered 1 to 4
<b>For Use With</b>	ZIPport multi-wire housings

## Agency Approvals

<b>UL Listed File #</b>	None
<b>UL Recognized File #</b>	E342543
<b>UL Hazardous File #</b>	None
<b>CE</b>	<a href="#">View CE declarations</a>
<b>CSA File #</b>	None
<b>RoHS Status</b>	Yes (See CE Doc)
<b>EU REACH</b>	<a href="#">View EU REACH document</a>