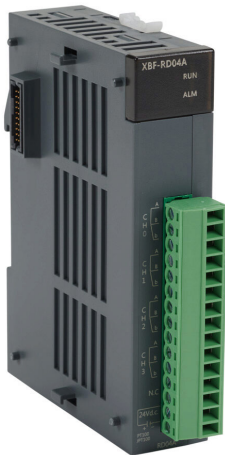


XBF-RD04A Cut Sheet



LS Electric XGB temperature input module, RTD, 4-channel, 14-bit resolution, input RTD type(s): Pt100 and JPt100. Removable terminal block included.

For complete product information, please see this item on our store at the following link:



<https://www.automationdirect.com/pn/XBF-RD04A>

Technical Specifications

Brand	LS Electric XGB
Item	Input module
I/O Module Type	Temperature
Input Signal Type(s)	RTD
Number Of Channels	4
Input RTD Signal Types	Pt100 and JPt100
Input Resolution	14-bit
External Power Requirement	External 24 VDC required
Includes	Removable terminal block
Programming Software	XG5000 programming software v4.7 or later

Agency Approvals

UL Listed File #	E124950
UL Recognized File #	None
UL Hazardous File #	None
CE	View CE declarations
CSA File #	None
RoHS Status	Yes (See CE Doc)
EU REACH	View EU REACH document

Dimensional Drawings



2D Drawing PDF Link:
<https://cdn.automationdirect.com/static/drawings/2d/XBF-RD04A.pdf>
See store item page for other formats.