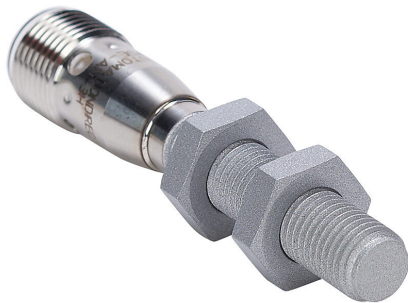


WSE-AN-3H Cut Sheet



AutomationDirect inductive proximity sensor, tubular, 8mm diameter x 60mm body, weld coated 316 stainless steel housing, NPN, N.O. output, 2mm sensing distance, flush, 100 Hz switching frequency, IP67 IP68, 4-pin M12 quick-disconnect.

For complete product information, please see this item on our store at the following link:



<https://www.automationdirect.com/pn/WSE-AN-3H>

Technical Specifications

Brand	AutomationDirect
Item	Proximity sensor
Sensor Type	Inductive
Application	Welding
Shape	Tubular
Housing Size	8mm diameter x 60mm body
Housing Material	Weld coated 316 stainless steel
Barrel Type	Threaded
Sensing Method	Extended sensing
Adjustable	No
Number of Wires	3
Switching Output	NPN
Operation Mode	N.O. output

Sensing Distance	2mm
Mounting Type	Flush
IO-Link Compatible	No
Switching Frequency	100 Hz
Operating Voltage	10-36 VDC
Operating Temperature	0 to 85C
Weld Field Immune	No
Chip Immune	No
IP Rating	IP67 IP68
Connection	4-pin M12 quick-disconnect
Includes	Mounting hardware
Additional Information	Purchase cable separately

Agency Approvals

UL Listed File #	E328811
UL Recognized File #	None
UL Hazardous File #	None
CE	View CE declarations
CSA File #	None
RoHS Status	Yes (See CE Doc)
EU REACH	View EU REACH document