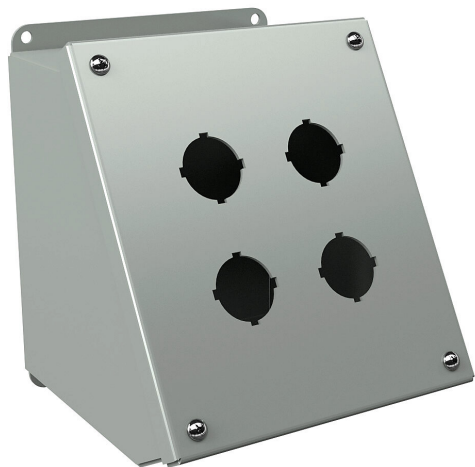


WPBA4S Cut Sheet



Wiegmann pushbutton console, 4 holes, 30mm, NEMA 12/13, 7 x 6 x 7in (HxWxD), wall mount, carbon steel, ANSI 61 gray, powder coat finish, screw cover.

For complete product information, please see this item on our store at the following link:



<https://www.automationdirect.com/pn/WPBA4S>

Technical Specifications

Brand	Wiegmann
Item	Pushbutton console
Number of Pushbutton Holes	4 holes
Pushbutton Hole Nominal Size	30mm
Slope Top	No
NEMA Rating	12/13
Nominal Enclosure Dimensions	7 x 6 x 7in (HxWxD)
Enclosure Height	7.52in
Enclosure Width	6.59in
Enclosure Depth	6.76in

Mounting	Wall
Integral Mounting Feet	No
Integral Mounting Flange	Yes
Dual Access	No
Knockouts	No
Material	Carbon steel
Color	ANSI 61 gray
Finish	Powder coat
Cover Type	Screw cover
Padlockable	No
Keylocking	No

Agency Approvals

UL Listed File #	E64791
UL Recognized File #	None
UL Hazardous File #	None
CE	None
CSA File #	None
RoHS Status	No
EU REACH	View EU REACH document

Dimensional Drawings



2D Drawing PDF Link:
<https://cdn.automationdirect.com/static/drawings/WPBA4S.pdf>
See store item page for other formats.