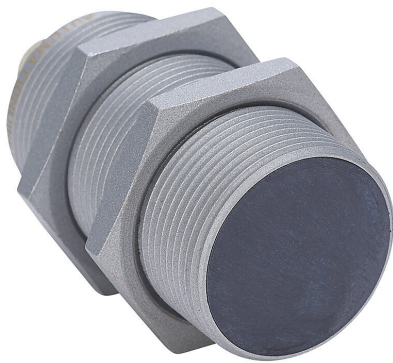


WKT-AP-3H Cut Sheet



AutomationDirect inductive proximity sensor, tubular, 30mm diameter x 65mm body, weld coated brass housing, PNP, N.O. output, 15mm sensing distance, flush, 2 kHz switching frequency, IP65 IP66 IP67 IP68 IP69K, 4-pin M12 quick-disconnect.

For complete product information, please see this item on our store at the following link:



<https://www.automationdirect.com/pn/WKT-AP-3H>

Technical Specifications

Brand	AutomationDirect
Item	Proximity sensor
Sensor Type	Inductive
Application	Welding and factor 1
Shape	Tubular
Housing Size	30mm diameter x 65mm body
Housing Material	Weld coated brass
Barrel Type	Threaded
Sensing Method	Extended sensing, factor 1
Adjustable	No
Number of Wires	3
Switching Output	PNP
Operation Mode	N.O. output

Sensing Distance	15mm
Mounting Type	Flush
IO-Link Compatible	No
Switching Frequency	2 kHz
Operating Voltage	10-30 VDC
Operating Temperature	-40 to 85C
Weld Field Immune	Yes
Chip Immune	No
IP Rating	IP65 IP66 IP67 IP68 IP69K
Connection	4-pin M12 quick-disconnect
Includes	Mounting hardware
Additional Information	Purchase cable separately

Agency Approvals

UL Listed File #	E328811
UL Recognized File #	None
UL Hazardous File #	None
CE	View CE declarations
CSA File #	None
RoHS Status	Yes (See CE Doc)
EU REACH	View EU REACH document

Dimensional Drawings



2D Drawing PDF Link:
<https://cdn.automationdirect.com/static/drawings/WKT-AP-3H.pdf>
See store item page for other formats.