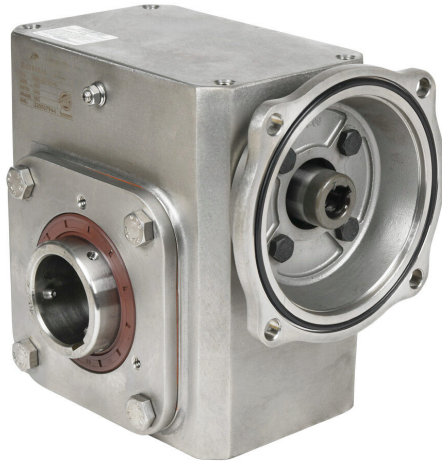


WGSS-262-040-HA Cut Sheet



IronHorse heavy duty worm gearbox, 40:1 ratio, 56C-Face input, hollow, 1.9375in diameter output shaft, nominal 1.33hp at 1.0 SF, 1454 lb-in mechanical output torque, 2-5/8in center distance, 304 stainless steel housing, top and bottom mount.

For complete product information, please see this item on our store at the following link:



<https://www.automationdirect.com/pn/WGSS-262-040-HA>

Technical Specifications

Brand	IronHorse
Item	Gearbox
Application	Washdown duty
Duty Rating	Heavy duty
Gearbox Type	Worm
Gear Ratio	40:1
Speed Rating	1750rpm input / 44rpm output
Input Configuration	56C-Face
Input Power Rating	Nominal 1.33hp at 1.0 SF
Output Configuration	Hollow
Gearbox Output Shaft Diameter	1.9375in

Mechanical Output Torque	1454 lb-in
Thermal Output Torque	1360 lb-in
Center Distance	2-5/8in
Housing Material	304 stainless steel
Mounting	Top and bottom
Finish	Smooth-grained
Lubrication Type	Pre-filled with Mobil Cibus 460 H1 food grade lubricant
Oil Seal Type	Double-lip

Agency Approvals

UL Listed File #	None
UL Recognized File #	None
UL Hazardous File #	None
CE	None
CSA File #	None
RoHS Status	No
EU REACH	View EU REACH document

Dimensional Drawings



2D Drawing PDF Link:
<https://cdn.automationdirect.com/static/drawings/2d/WGSS-262-040-HA.pdf>
See store item page for other formats.