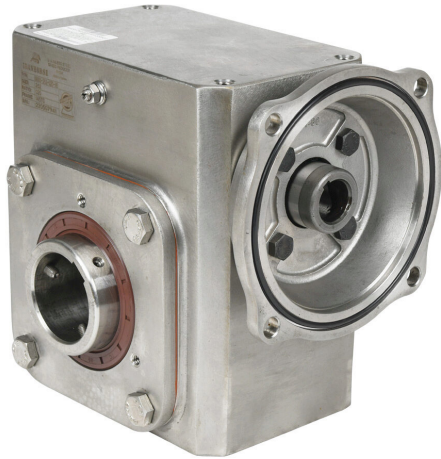


# WGSS-262-020-HB Cut Sheet



IronHorse heavy duty worm gearbox, 20:1 ratio, 145TC-Face input, hollow, 1.9375in diameter output shaft, nominal 2.36hp at 1.0 SF, 1472 lb-in mechanical output torque, 2-5/8in center distance, 304 stainless steel housing, top and bottom mount.

For complete product information, please see this item on our store at the following link:



<https://www.automationdirect.com/pn/WGSS-262-020-HB>

## Technical Specifications

<b>Brand</b>	IronHorse
<b>Item</b>	Gearbox
<b>Application</b>	Washdown duty
<b>Duty Rating</b>	Heavy duty
<b>Gearbox Type</b>	Worm
<b>Gear Ratio</b>	20:1
<b>Speed Rating</b>	1750rpm input / 87rpm output
<b>Input Configuration</b>	145TC-Face
<b>Input Power Rating</b>	Nominal 2.36hp at 1.0 SF
<b>Output Configuration</b>	Hollow
<b>Gearbox Output Shaft Diameter</b>	1.9375in

<b>Mechanical Output Torque</b>	1472 lb-in
<b>Thermal Output Torque</b>	1206 lb-in
<b>Center Distance</b>	2-5/8in
<b>Housing Material</b>	304 stainless steel
<b>Mounting</b>	Top and bottom
<b>Finish</b>	Smooth-grained
<b>Lubrication Type</b>	Pre-filled with Mobil Cibus 460 H1 food grade lubricant
<b>Oil Seal Type</b>	Double-lip

## Agency Approvals

<b>UL Listed File #</b>	None
<b>UL Recognized File #</b>	None
<b>UL Hazardous File #</b>	None
<b>CE</b>	None
<b>CSA File #</b>	None
<b>RoHS Status</b>	No
<b>EU REACH</b>	<a href="#">View EU REACH document</a>

## Dimensional Drawings



2D Drawing PDF Link:  
<https://cdn.automationdirect.com/static/drawings/2d/WGSS-262-020-HB.pdf>  
See store item page for other formats.