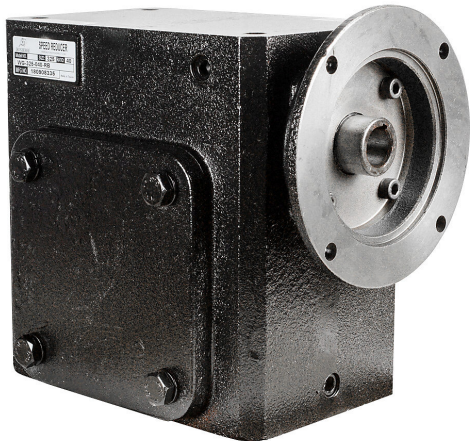


# WG-325-040-RB Cut Sheet



IronHorse heavy-duty worm gearbox, 40:1 ratio, 145TC-Face input, right hand, 1.375in diameter output shaft, nominal 2hp at 1.0 SF, 3692 lb-in mechanical output torque, 3-1/4in center distance, cast iron housing, tapped-base mount.

For complete product information, please see this item on our store at the following link:



<https://www.automationdirect.com/pn/WG-325-040-RB>

## Technical Specifications

<b>Brand</b>	IronHorse
<b>Item</b>	Gearbox
<b>Application</b>	General purpose
<b>Duty Rating</b>	Heavy-duty
<b>Gearbox Type</b>	Worm
<b>Gear Ratio</b>	40:1
<b>Speed Rating</b>	1750rpm input / 44rpm output
<b>Input Configuration</b>	145TC-Face
<b>Input Power Rating</b>	Nominal 2hp at 1.0 SF
<b>Output Configuration</b>	Right hand

<b>Gearbox Output Shaft Diameter</b>	1.375in
<b>Mechanical Output Torque</b>	3692 lb-in
<b>Thermal Output Torque</b>	2156 lb-in
<b>Center Distance</b>	3-1/4in
<b>Housing Material</b>	Cast iron
<b>Mounting</b>	Tapped-base
<b>Finish</b>	Anti-corrosion primer and paint
<b>Lubrication Type</b>	Pre-filled with synthetic lube
<b>Oil Seal Type</b>	Double-lip

## Agency Approvals

<b>UL Listed File #</b>	none
<b>UL Recognized File #</b>	none
<b>UL Hazardous File #</b>	none
<b>CE</b>	None
<b>CSA File #</b>	none
<b>RoHS Status</b>	No
<b>EU REACH</b>	View EU REACH document

## Dimensional Drawings



2D Drawing PDF Link:  
<https://cdn.automationdirect.com/static/drawings/WG-325-040-RB.pdf>  
See store item page for other formats.