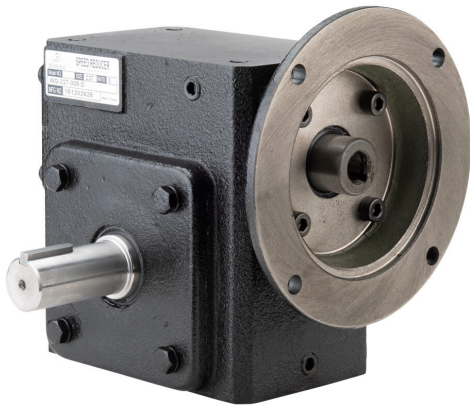


WG-237-005-D Cut Sheet



IronHorse heavy-duty worm gearbox, 5:1 ratio, 56C-Face input, dual, 1.125in diameter output shaft, nominal 3hp at 1.0 SF, 766 lb-in mechanical output torque, 2-3/8in center distance, cast iron housing, tapped-base mount.

For complete product information, please see this item on our store at the following link:



<https://www.automationdirect.com/pn/WG-237-005-D>

Technical Specifications

| | |
|-------------------------------|---------------------------------|
| Brand | IronHorse |
| Item | Gearbox |
| Application | General purpose |
| Duty Rating | Heavy-duty |
| Gearbox Type | Worm |
| Gear Ratio | 5:1 |
| Speed Rating | 1750rpm input / 350rpm output |
| Input Configuration | 56C-Face |
| Input Power Rating | Nominal 3hp at 1.0 SF |
| Output Configuration | Dual |
| Gearbox Output Shaft Diameter | 1.125in |
| Mechanical Output Torque | 798 lb-in |
| Thermal Output Torque | 630 lb-in |
| Center Distance | 2-3/8in |
| Housing Material | Cast iron |
| Mounting | Tapped-base |
| Finish | Anti-corrosion primer and paint |
| Lubrication Type | Pre-filled with synthetic lube |
| Oil Seal Type | Double-lip |

Agency Approvals

| | |
|----------------------|--|
| UL Listed File # | None |
| UL Recognized File # | None |
| UL Hazardous File # | None |
| CE | None |
| CSA File # | None |
| RoHS Status | No |
| EU REACH | View EU REACH document |