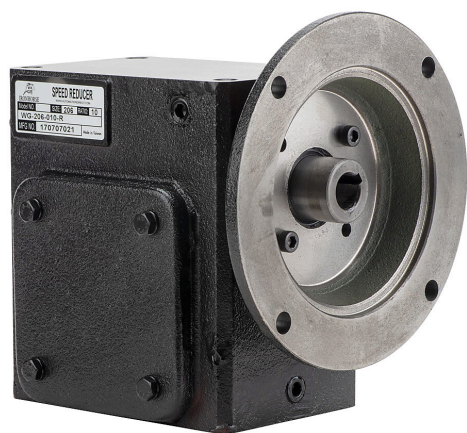


WG-206-010-R Cut Sheet



IronHorse heavy-duty worm gearbox, 10:1 ratio, 56C-Face input, right hand, 1in diameter output shaft, nominal 1.5hp at 1.0 SF, 935 lb-in mechanical output torque, 2-1/16in center distance, cast iron housing, tapped-base mount.

For complete product information, please see this item on our store at the following link:



<https://www.automationdirect.com/pn/WG-206-010-R>

Technical Specifications

Brand	IronHorse
Item	Gearbox
Application	General purpose
Duty Rating	Heavy-duty
Gearbox Type	Worm
Gear Ratio	10:1
Speed Rating	1750rpm input / 175rpm output
Input Configuration	56C-Face
Input Power Rating	Nominal 1.5hp at 1.0 SF
Output Configuration	Right hand

Gearbox Output Shaft Diameter	1in
Mechanical Output Torque	935 lb-in
Thermal Output Torque	708 lb-in
Center Distance	2-1/16in
Housing Material	Cast iron
Mounting	Tapped-base
Finish	Anti-corrosion primer and paint
Lubrication Type	Pre-filled with synthetic lube
Oil Seal Type	Double-lip

Agency Approvals

UL Listed File #	None
UL Recognized File #	None
UL Hazardous File #	None
CE	None
CSA File #	None
RoHS Status	No
EU REACH	View EU REACH document

Dimensional Drawings



2D Drawing PDF Link:
<https://cdn.automationdirect.com/static/drawings/WG-206-010-R.pdf>
See store item page for other formats.