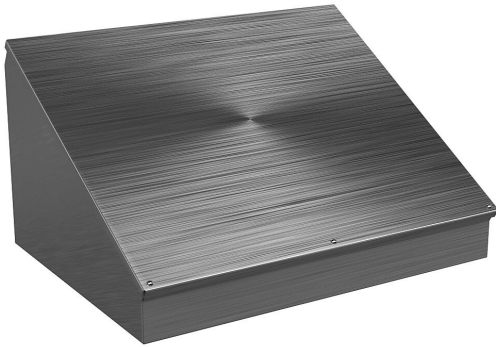


# WC20C24SS Cut Sheet



Wiegmann operator console, NEMA 4/4X/12/13, 20 x 24 x 13in (HxWxD), desktop or pedestal mount, 304 stainless steel, No. 3 intermediate polished finish.

For complete product information, please see this item on our store at the following link:



<https://www.automationdirect.com/pn/WC20C24SS>

## Technical Specifications

<b>Brand</b>	Wiegmann
<b>Item</b>	Operator console
<b>Slope Top</b>	No
<b>3-Piece Assembly</b>	No
<b>Vented</b>	No
<b>NEMA Rating</b>	4/4X/12/13
<b>Nominal Enclosure Dimensions</b>	20 x 24 x 13in (HxWxD)
<b>Enclosure Height</b>	20.31in
<b>Enclosure Width</b>	24.31in
<b>Enclosure Depth</b>	13.10in
<b>Mounting</b>	Desktop or pedestal
<b>Integral Mounting Feet</b>	No

<b>Integral Mounting Flange</b>	No
<b>Dual Access</b>	No
<b>Knockouts</b>	No
<b>Bottom Gland Plate</b>	No
<b>Material</b>	304 stainless steel
<b>Finish</b>	No. 3 intermediate polished
<b>Hinge Type</b>	Stainless steel continuous hinge
<b>Number of Hinges Per Door</b>	1
<b>Shelf</b>	No
<b>Padlockable</b>	No
<b>Keylocking</b>	No

## Agency Approvals

<b>UL Listed File #</b>	E64791
<b>UL Recognized File #</b>	None
<b>UL Hazardous File #</b>	None
<b>CE</b>	None
<b>CSA File #</b>	None
<b>RoHS Status</b>	No
<b>EU REACH</b>	<a href="#">View EU REACH document</a>

## Dimensional Drawings



2D Drawing PDF Link:  
<https://cdn.automationdirect.com/static/drawings/WC20C24SS.pdf>  
See store item page for other formats.