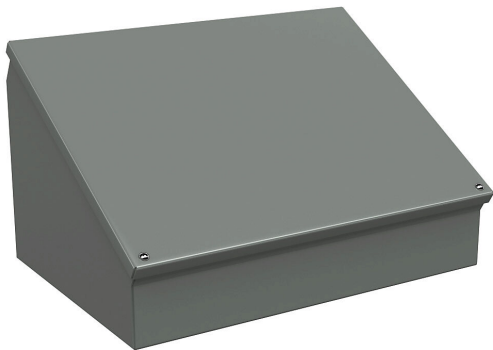


# WC12C16 Cut Sheet



Wiegmann operator console, NEMA 12/13, 12 x 16 x 9in (HxWxD), desktop or pedestal mount, carbon steel, ANSI 61 gray, powder coat finish.

For complete product information, please see this item on our store at the following link:



<https://www.automationdirect.com/pn/WC12C16>

## Technical Specifications

Brand	Wiegmann
Item	Operator console
Slope Top	No
3-Piece Assembly	No
Vented	No
NEMA Rating	12/13
Nominal Enclosure Dimensions	12 x 16 x 9in (HxWxD)
Enclosure Height	12.31in
Enclosure Width	16.31in
Enclosure Depth	9.10in
Mounting	Desktop or pedestal
Integral Mounting Feet	No
Integral Mounting Flange	No

Dual Access	No
Knockouts	No
Bottom Gland Plate	No
Material	Carbon steel
Color	ANSI 61 gray
Finish	Powder coat
Hinge Type	Continuous hinge
Number of Hinges Per Door	1
Shelf	No
Padlockable	No
Keylocking	No
Additional Information	Purchase pedestal column separately

## Agency Approvals

UL Listed File #	E64791
UL Recognized File #	None
UL Hazardous File #	None
CE	None
CSA File #	None
RoHS Status	No
EU REACH	<a href="#">View EU REACH document</a>

## Dimensional Drawings



2D Drawing PDF Link:  
<https://cdn.automationdirect.com/static/drawings/WC12C16.pdf>  
See store item page for other formats.