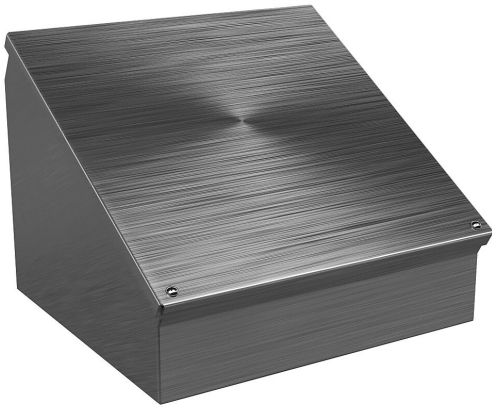


WC12C12SS Cut Sheet



Wiegmann operator console, NEMA 4/4X/12/13, 12 x 12 x 9in (HxWxD), desktop or pedestal mount, 304 stainless steel, No. 3 intermediate polished finish.

For complete product information, please see this item on our store at the following link:



<https://www.automationdirect.com/pn/WC12C12SS>

Technical Specifications

Brand	Wiegmann
Item	Operator console
Slope Top	No
3-Piece Assembly	No
Vented	No
NEMA Rating	4/4X/12/13
Nominal Enclosure Dimensions	12 x 12 x 9in (HxWxD)
Enclosure Height	12.31in
Enclosure Width	12.31in
Enclosure Depth	9.10in
Mounting	Desktop or pedestal
Integral Mounting Feet	No

Integral Mounting Flange	No
Dual Access	No
Knockouts	No
Bottom Gland Plate	No
Material	304 stainless steel
Finish	No. 3 intermediate polished
Hinge Type	Stainless steel continuous hinge
Number of Hinges Per Door	1
Shelf	No
Padlockable	No
Keylocking	No

Agency Approvals

UL Listed File #	E64791
UL Recognized File #	None
UL Hazardous File #	None
CE	None
CSA File #	None
RoHS Status	No
EU REACH	View EU REACH document

Dimensional Drawings



2D Drawing PDF Link:
<https://cdn.automationdirect.com/static/drawings/WC12C12SS.pdf>
See store item page for other formats.