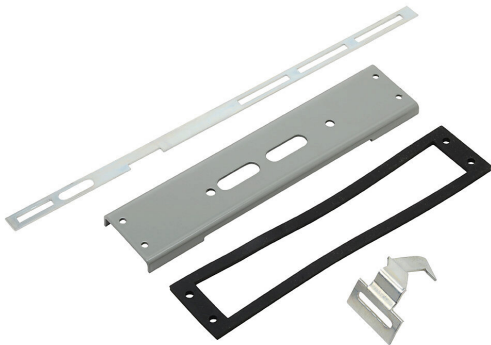


WA21FUFA Cut Sheet



Wiegmann operator adapter assembly, ANSI 61 gray. For use with Fuji Electric BW9F series disconnects.

For complete product information, please see this item on our store at the following link:



<https://www.automationdirect.com/pn/WA21FUFA>

Technical Specifications

| | |
|--------------|---------------------------------------|
| Brand | Wiegmann |
| Item | Operator adapter assembly |
| Color | ANSI 61 gray |
| For Use With | Fuji Electric BW9F series disconnects |

Agency Approvals

| | |
|----------------------|--|
| UL Listed File # | None |
| UL Recognized File # | None |
| UL Hazardous File # | None |
| CE | None |
| CSA File # | None |
| RoHS Status | No |
| EU REACH | View EU REACH document |