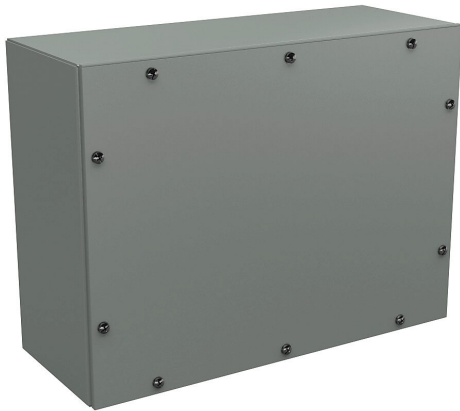


WA121606GSC Cut Sheet



Wiegmann enclosure, NEMA 3/4, 12 x 16 x 6in (HxWxD), wall mount, carbon steel, ANSI 61 gray, powder coat finish, screw cover.

For complete product information, please see this item on our store at the following link:



<https://www.automationdirect.com/pn/WA121606GSC>

Technical Specifications

Brand	Wiegmann
Item	Enclosure
Slope Top	No
3-Piece Assembly	No
Vented	No
NEMA Rating	3/4
Nominal Enclosure Dimensions	12 x 16 x 6in (HxWxD)
Enclosure Height	12.13in
Enclosure Width	16.13in
Enclosure Depth	6.36in
Mounting	Wall
Integral Mounting Feet	No

Integral Mounting Flange	No
Dual Access	No
Knockouts	No
Bottom Gland Plate	No
Material	Carbon steel
Color	ANSI 61 gray
Finish	Powder coat
Cover Type	Screw cover
Shelf	No
Padlockable	No
Keylocking	No

Agency Approvals

UL Listed File #	E23553
UL Recognized File #	None
UL Hazardous File #	None
CE	None
CSA File #	None
RoHS Status	No
EU REACH	View EU REACH document

Dimensional Drawings



2D Drawing PDF Link:
<https://cdn.automationdirect.com/static/drawings/WA121606GSC.pdf>
See store item page for other formats.