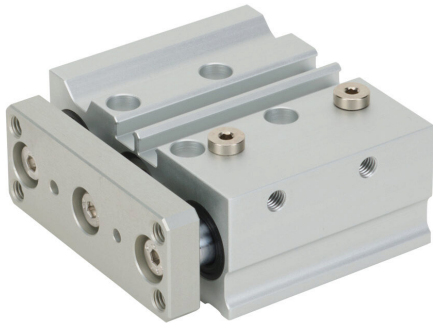


W143016A020N Cut Sheet



Metal Work pneumatic cylinder, dual guide rod, 16mm bore, 8mm rod diameter, 20mm stroke, double acting, magnetic piston, universal mount.

For complete product information, please see this item on our store at the following link:



<https://www.automationdirect.com/pn/W143016A020N>

Technical Specifications

Brand	Metal Work	Mounting	Universal
Item	Cylinder	Action Type	Double acting
Working Fluid	Air or inert gas	Magnetic Piston	Magnetic piston
Cylinder Type	Dual guide rod	Body Material	Aluminum
Bore Diameter	16mm	Rod Material	Chrome-plated steel
Stroke	20mm	Rod Diameter	8mm
Port Size	M5 x 0.8 female ISO	Bushing Type	Bronze bushings

Agency Approvals

UL Listed File #	None
UL Recognized File #	None
UL Hazardous File #	None
CE	View CE declarations
CSA File #	None
RoHS Status	Yes (See CE Doc)
EU REACH	View EU REACH document

Dimensional Drawings



2D Drawing PDF Link:
<https://cdn.automationdirect.com/static/drawings/2d/W143016A020N.pdf>
See store item page for other formats.