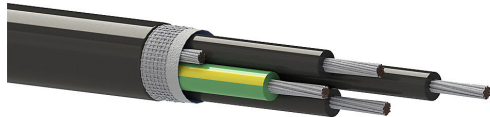


VFDC-14-4B-1 Cut Sheet

Southwire VFD cable, shielded, 4 conductors (includes ground), 14 AWG, tinned copper, XLPE conductor insulation material, black with white numbers and green/yellow ground, TPE jacket, black, cut to length.



For complete product information, please see this item on our store at the following link:



<https://www.automationdirect.com/pn/VFDC-14-4B-1>

Technical Specifications

Brand	Southwire
Item	Cable
Wire/Cable Type	VFD
UL Wire/Cable Type	TC-ER and WTTC
Applicable Standards	UL 2277 and ECOLAB
Application	Drive and motor
Flexibility	Semi-flexible
Voltage Rating	600V (Type TC-ER), 1000V (Type WTTC, Flexible Motor Supply Cable)
Conductors	4 conductors (includes ground)
Conductor Size	14 AWG
Conductor Stranding	41-stranded
Conductor Material	Tinned copper
Conductor Insulation Material	Cross linked polyethylene (XLPE)

Conductor Insulation Color	Black with white numbers and green/yellow ground
Shielding	Overall foil and braid shielded
Jacket Material	TPE
Jacket Color	Black
Nominal Overall Cable Diameter	0.565in
Bulk Length	Cut to length
Package Type	<ul style="list-style-type: none">• 20 to 50ft = Coil• 51 to 120ft = 14 x 7in Reel• 121 to 175ft = 14 x 10in Reel• 176 to 270ft = 16 x 10in Reel• 271 to 375ft = 18 x 10in Reel• 376 to 485ft = 18 x 13in Reel• 486 to 1090ft = 24 x 17in Wooden Reel• 1091 to 1740ft = 30 x 17in Wooden Reel• 1741 to 2500ft = Large Wooden Reel

Agency Approvals

UL Listed File #	E75755
CE	None
CSA File #	LL90458
RoHS Status	Meets RoHS Chemical Restrictions - No CE (See RoHS Statement Below)
EU REACH	View EU REACH document
Other	RoHS Statement