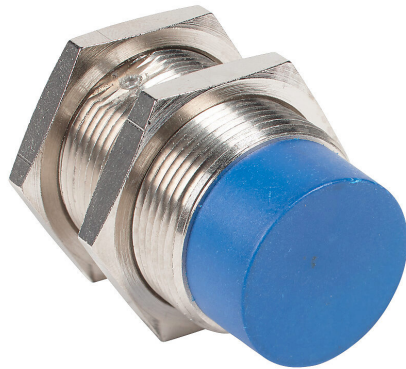


V3T1-S0-4Q Cut Sheet



Micro Detectors inductive proximity sensor, tubular, 30mm diameter x 60mm body, nickel-plated brass housing, N.C. (VAC) or N.O./N.C. (VDC) output, 18mm sensing distance, non-flush, 25 Hz (AC)/190 Hz (DC) switching frequency, IP67, 1/2in - 20UNF thread.

For complete product information, please see this item on our store at the following link:



<https://www.automationdirect.com/pn/V3T1-S0-4Q>

Technical Specifications

Brand	Micro Detectors
Item	Proximity sensor
Sensor Type	Inductive
Application	Standard duty and AC powered
Shape	Tubular
Housing Size	30mm diameter x 60mm body
Housing Material	Nickel-plated brass
Barrel Type	Threaded
Sensing Method	Extended sensing
Adjustable	No
Number of Wires	2
Operation Mode	N.C. (VAC) or N.O./N.C. (VDC) output

Sensing Distance	18mm
Mounting Type	Non-flush
IO-Link Compatible	No
Switching Frequency	25 Hz (AC)/190 Hz (DC)
Operating Voltage	20-250 VAC/VDC
Operating Temperature	-25 to 70c
Weld Field Immune	No
Chip Immune	No
IP Rating	IP67
Connection	1/2in - 20UNF thread
Includes	Mounting hardware
Additional Information	Purchase cable separately

Agency Approvals

UL Listed File #	E187310
UL Recognized File #	None
UL Hazardous File #	None
CE	View CE declarations
CSA File #	None
RoHS Status	Yes (See CE Doc)
EU REACH	View EU REACH document

Dimensional Drawings



2D Drawing PDF Link:
<https://cdn.automationdirect.com/static/drawings/V3T1-S0-4Q.pdf>
See store item page for other formats.