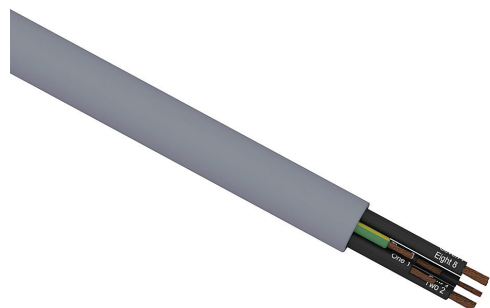


V30164-1 Cut Sheet



Southwire flexible control cable, unshielded, 9 conductors (includes ground), 20 AWG, bare copper, PVC/Nylon conductor insulation material, black with white numbers and green/yellow ground, TPE jacket, gray, cut to length.

For complete product information, please see this item on our store at the following link:



<https://www.automationdirect.com/pn/V30164-1>

Technical Specifications

| | |
|--------------------------------------|--|
| Brand | Southwire |
| Item | Cable |
| Wire/Cable Type | Control |
| UL Wire/Cable Type | PLTC-ER, ITC-ER and MTW |
| Applicable Standards | ECOLAB |
| Application | General purpose |
| Flexibility | Flexible |
| Voltage Rating | 300V (Types PLTC-ER, ITC-ER), 600V (Type MTW) |
| Conductors | 9 conductors (includes ground) |
| Conductor Size | 20 AWG |
| Conductor Stranding | 10-stranded |
| Conductor Material | Bare copper |
| Conductor Insulation Material | PVC/Nylon |
| Conductor Insulation Color | Black with white numbers and green/yellow ground |

| | |
|---------------------------------------|---|
| Shielding | Unshielded |
| Jacket Material | TPE |
| Jacket Color | Gray |
| Nominal Overall Cable Diameter | 0.409in |
| Bulk Length | Cut to length |
| Package Type | <ul style="list-style-type: none">• 20 to 50ft = Coil• 51 to 235ft = 14 x 7in Reel• 236 to 335ft = 14 x 10in Reel• 336 to 510ft = 16 x 10in Reel• 511 to 715ft = 18 x 10in Reel• 716 to 930ft = 18 x 13in Reel• 931 to 2075ft = 24 x 17in Wooden Reel• 2076 to 3320ft = 30 x 17in Wooden Reel• 3321 to 5000ft = Large Wooden Reel |

Agency Approvals

| | |
|-----------------------------|---|
| UL Listed File # | E57497 |
| UL Recognized File # | None |
| UL Hazardous File # | None |
| CE | None |
| CSA File # | 90458 |
| RoHS Status | Meets RoHS Chemical Restrictions - No CE (See RoHS Statement Below) |
| EU REACH | View EU REACH document |
| Other | RoHS Statement |