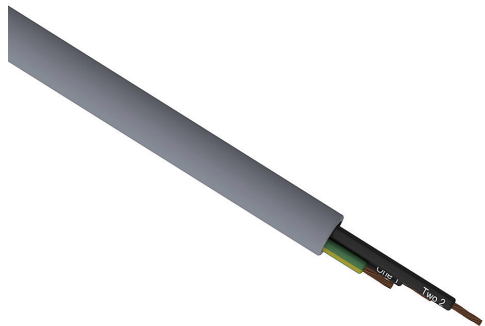


# V30156-1 Cut Sheet



Southwire flexible control cable, unshielded, 3 conductors (includes ground), 20 AWG, bare copper, PVC/Nylon conductor insulation material, black with white numbers and green/yellow ground, TPE jacket, gray, cut to length.

For complete product information, please see this item on our store at the following link:



<https://www.automationdirect.com/pn/V30156-1>

## Technical Specifications

<b>Brand</b>	Southwire
<b>Item</b>	Cable
<b>Wire/Cable Type</b>	Control
<b>UL Wire/Cable Type</b>	PLTC-ER, ITC-ER and MTW
<b>Applicable Standards</b>	ECOLAB
<b>Application</b>	General purpose
<b>Flexibility</b>	Flexible
<b>Voltage Rating</b>	300V (Types PLTC-ER, ITC-ER), 600V (Type MTW)
<b>Conductors</b>	3 conductors (includes ground)
<b>Conductor Size</b>	20 AWG
<b>Conductor Stranding</b>	10-stranded
<b>Conductor Material</b>	Bare copper
<b>Conductor Insulation Material</b>	PVC/Nylon

<b>Conductor Insulation Color</b>	Black with white numbers and green/yellow ground
<b>Shielding</b>	Unshielded
<b>Jacket Material</b>	TPE
<b>Jacket Color</b>	Gray
<b>Nominal Overall Cable Diameter</b>	0.264in
<b>Bulk Length</b>	Cut to length
<b>Package Type</b>	<ul style="list-style-type: none"><li>• 30 to 99ft = Coil</li><li>• 100 to 560ft = 14 x 7in Reel</li><li>• 561 to 800ft = 14 x 10in Reel</li><li>• 801 to 1225ft = 16 x 10in Reel</li><li>• 1226 to 1715ft = 18 x 10in Reel</li><li>• 1716 to 2225ft = 18 x 13in Reel</li><li>• 2226 to 4980ft = 24 x 17in Wooden Reel</li><li>• 4981 to 5000ft = 30 x 17in Wooden Reel</li></ul>

## Agency Approvals

<b>UL Listed File #</b>	E57497
<b>UL Recognized File #</b>	None
<b>UL Hazardous File #</b>	None
<b>CE</b>	None
<b>CSA File #</b>	90458
<b>RoHS Status</b>	Meets RoHS Chemical Restrictions - No CE (See RoHS Statement Below)
<b>EU REACH</b>	<a href="#">View EU REACH document</a>
<b>Other</b>	<a href="#">RoHS Statement</a>