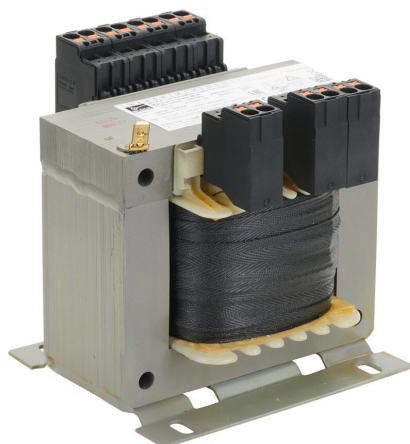


# USTE400/2X115 Cut Sheet



BLOCK control transformer, open core, 400 VA, 1-phase, 208-600 VAC selectable, 115/230 VAC secondary, 50/60 Hz, panel mount.

For complete product information, please see this item on our store at the following link:



<https://www.automationdirect.com/pn/USTE400/2X115>

## Technical Specifications

<b>Brand</b>	BLOCK
<b>Series</b>	USTE
<b>Item</b>	Transformer
<b>Transformer Type</b>	Control
<b>Core Type</b>	Open
<b>Power Rating</b>	400 VA
<b>Number of Phases</b>	1
<b>Primary Voltage</b>	208/230/380/400/415/440/460/ 480/500/525/550/575/600 VAC
<b>Secondary Voltage</b>	115/230 VAC
<b>Frequency</b>	50/60 Hz
<b>Fused</b>	No
<b>Electrostatic Shield</b>	No
<b>Mounting</b>	Panel
<b>Connection</b>	Push-in terminal
<b>Additional Information</b>	Voltage selection jumpers sold separately

## Agency Approvals

<b>UL Listed File #</b>	E103521
<b>CE</b>	<a href="#">View CE declarations</a>
<b>RoHS Status</b>	Yes (See CE Doc)
<b>EU REACH</b>	<a href="#">View EU REACH document</a>

## Dimensional Drawings



2D Drawing PDF Link:  
[https://cdn.automationdirect.com/static/drawings/2d/USTE400\\_2X115.pdf](https://cdn.automationdirect.com/static/drawings/2d/USTE400_2X115.pdf)  
See store item page for other formats.