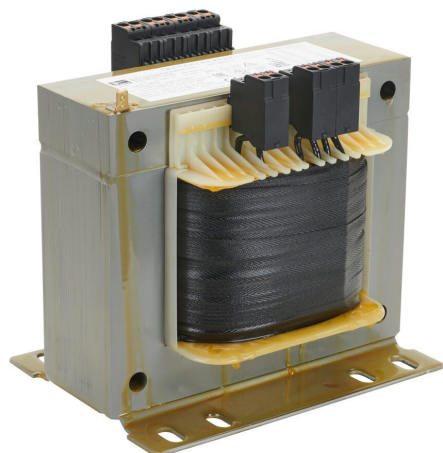


USTE1600/2X115 Cut Sheet



BLOCK control transformer, open core, 1.6 kVA, 1-phase, 208-600 VAC selectable, 115/230 VAC secondary, 50/60 Hz, panel mount.

For complete product information, please see this item on our store at the following link:



<https://www.automationdirect.com/pn/USTE1600/2X115>

Technical Specifications

Brand	BLOCK
Series	USTE
Item	Transformer
Transformer Type	Control
Core Type	Open
Power Rating	1.6 kVA
Number of Phases	1
Primary Voltage	208/230/380/400/415/440/460/ 480/500/525/550/575/600 VAC
Secondary Voltage	115/230 VAC
Frequency	50/60 Hz
Fused	No
Electrostatic Shield	No
Mounting	Panel
Connection	Push-in terminal
Additional Information	Voltage selection jumpers sold separately

Agency Approvals

UL Listed File #	E103521
CE	View CE declarations
RoHS Status	Yes (See CE Doc)
EU REACH	View EU REACH document

Dimensional Drawings



2D Drawing PDF Link:
[https://cdn.automationdirect.com/
/static/drawings/2d/USTE1600_2X115.pdf](https://cdn.automationdirect.com/static/drawings/2d/USTE1600_2X115.pdf)
See store item page for other formats.