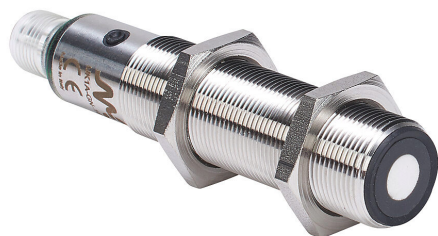


# UK1A-GN-1E Cut Sheet



Micro Detectors ultrasonic proximity sensor, tubular, 18mm diameter x 91.6mm body, 316L stainless steel housing, NPN, N.O./N.C. selectable output, 50-400mm sensing distance, 10 Hz switching frequency, IP67, 4-pin M12 quick-disconnect.

For complete product information, please see this item on our store at the following link:



<https://www.automationdirect.com/pn/UK1A-GN-1E>

## Technical Specifications

|                            |                             |
|----------------------------|-----------------------------|
| <b>Brand</b>               | Micro Detectors             |
| <b>Item</b>                | Proximity sensor            |
| <b>Sensor Type</b>         | Ultrasonic                  |
| <b>Shape</b>               | Tubular                     |
| <b>Housing Size</b>        | 18mm diameter x 91.6mm body |
| <b>Housing Material</b>    | 316L stainless steel        |
| <b>Barrel Type</b>         | Threaded                    |
| <b>Sensing Method</b>      | Diffuse                     |
| <b>Adjustable</b>          | Yes                         |
| <b>Number of Wires</b>     | 4                           |
| <b>Switching Output</b>    | NPN                         |
| <b>Operation Mode</b>      | N.O./N.C. selectable output |
| <b>Sensing Distance</b>    | 50-400mm                    |
| <b>IO-Link Compatible</b>  | No                          |
| <b>Switching Frequency</b> | 10 Hz                       |
| <b>Operating Voltage</b>   | 10-30 VDC                   |
| <b>IP Rating</b>           | IP67                        |
| <b>Connection</b>          | 4-pin M12 quick-disconnect  |
| <b>Includes</b>            | Mounting hardware           |

## Agency Approvals

|                             |  |
|-----------------------------|--|
| <b>UL Listed File #</b>     | E187310                                |
| <b>UL Recognized File #</b> | None                                   |
| <b>UL Hazardous File #</b>  | None                                   |
| <b>CE</b>                   | <a href="#">View CE declarations</a>   |
| <b>CSA File #</b>           | None                                   |
| <b>RoHS Status</b>          | Yes (See CE Doc)                       |
| <b>EU REACH</b>             | <a href="#">View EU REACH document</a> |