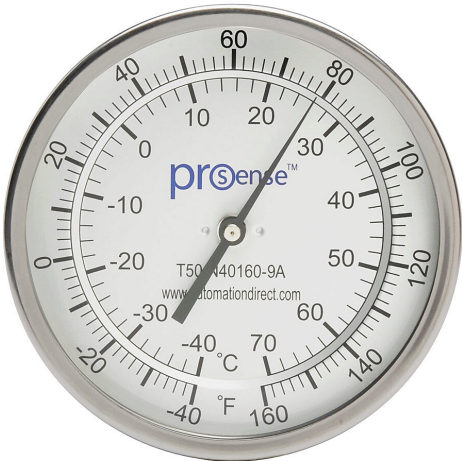


T50-N40160-9A Cut Sheet



ProSense bi-metal dial thermometer, 5in diameter, 9in insertion length, -40 to 160 deg F/-40 to 70 deg C, 1/2in male NPT process connection, center back, adjustable angle mount.

For complete product information, please see this item on our store at the following link:



<https://www.automationdirect.com/pn/T50-N40160-9A>

Technical Specifications

Brand	ProSense
Item	Bi-metal dial thermometer
Diameter	5in
Insertion Length	9in
Scale	-40 to 160 deg F/-40 to 70 deg C
Process Connection	1/2in male NPT
Mounting	Center back, adjustable angle

Agency Approvals

UL Listed File #	None
UL Recognized File #	None
UL Hazardous File #	None
CE	None
CSA File #	None
RoHS Status	No
EU REACH	View EU REACH document