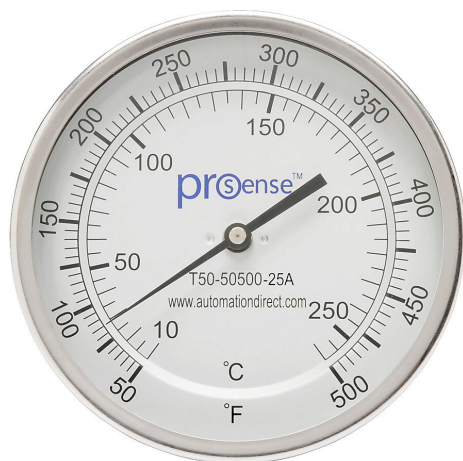


# T50-50500-25A Cut Sheet



ProSense bi-metal dial thermometer, 5in diameter, 2-1/2in insertion length, 50 to 500 deg F/10 to 260 deg C, 1/2in male NPT process connection, center back, adjustable angle mount.

For complete product information, please see this item on our store at the following link:



<https://www.automationdirect.com/pn/T50-50500-25A>

## Technical Specifications

Brand	ProSense
Item	Bi-metal dial thermometer
Diameter	5in
Insertion Length	2-1/2in
Scale	50 to 500 deg F/10 to 260 deg C
Process Connection	1/2in male NPT
Mounting	Center back, adjustable angle

## Agency Approvals

UL Listed File #	None
UL Recognized File #	None
UL Hazardous File #	None
CE	None
CSA File #	None
RoHS Status	No
EU REACH	<a href="#">View EU REACH document</a>

## Dimensional Drawings



2D Drawing PDF Link:  
<https://cdn.automationdirect.com/static/drawings/T50-50500-25A.pdf>  
See store item page for other formats.