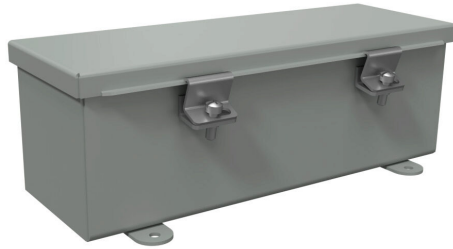


T4412CH Cut Sheet



Wiegmann wiring trough, 4 x 4 x 12in (HxDxL), NEMA 4, carbon steel, ANSI 61 gray, powder coat finish, single-door.

For complete product information, please see this item on our store at the following link:



<https://www.automationdirect.com/pn/T4412CH>

Technical Specifications

Brand	Wiegmann
Item	Wiring trough
NEMA Rating	4
Nominal Enclosure Dimensions	4 x 12 x 4in (HxWxD)
Enclosure Height	4.22in
Enclosure Depth	4.25in
Enclosure Length	12.31in
Integral Mounting Feet	Yes
Knockouts	No
Material	Carbon steel
Color	ANSI 61 gray
Finish	Powder coat
Cover Type	Single-door
Latch Type	Plated steel clamps

Agency Approvals

UL Listed File #	E32576
UL Recognized File #	N/A
UL Hazardous File #	N/A
CE	None
CSA File #	N/A
RoHS Status	No
EU REACH	View EU REACH document