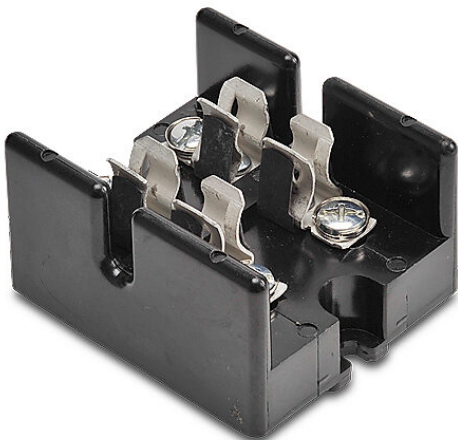


T30030-2SR Cut Sheet



Bussmann fuse block, accepts T fuses, 30A, 300V, 2-pole, 18-10 AWG copper only, screw with pressure plate, panel mount.

For complete product information, please see this item on our store at the following link:



<https://www.automationdirect.com/pn/T30030-2SR>

Technical Specifications

Brand	Bussmann
Item	Fuse block
Modular	No
Blown Fuse Indicator	No
Multi-Wire	No
Accepts Fuse Class	T
Amperage Rating	30A
Voltage Rating	300V

Number of Poles	2
Conductor Size	18-10 AWG copper only
Conductor Connection Type	Screw with pressure plate
SCCR Rating	200kA SCCR
Fuse Connection Type	Clip with reinforced spring
Mounting	Panel

Agency Approvals

UL Listed File #	E14853
UL Recognized File #	None
UL Hazardous File #	None
CE	View CE declarations
CSA File #	47235
RoHS Status	No
EU REACH	View EU REACH document
Other	None

Dimensional Drawings



2D Drawing PDF Link:
<https://cdn.automationdirect.com/static/drawings/T30030-2SR.pdf>
See store item page for other formats.